

Ferdsestelling Snøhetta villreinområde sommeren 2025

Samarbeid mellom Statens Naturoppsyn, Dovrefjell-Sunndalsfjella nasjonalparkstyre og NINA.

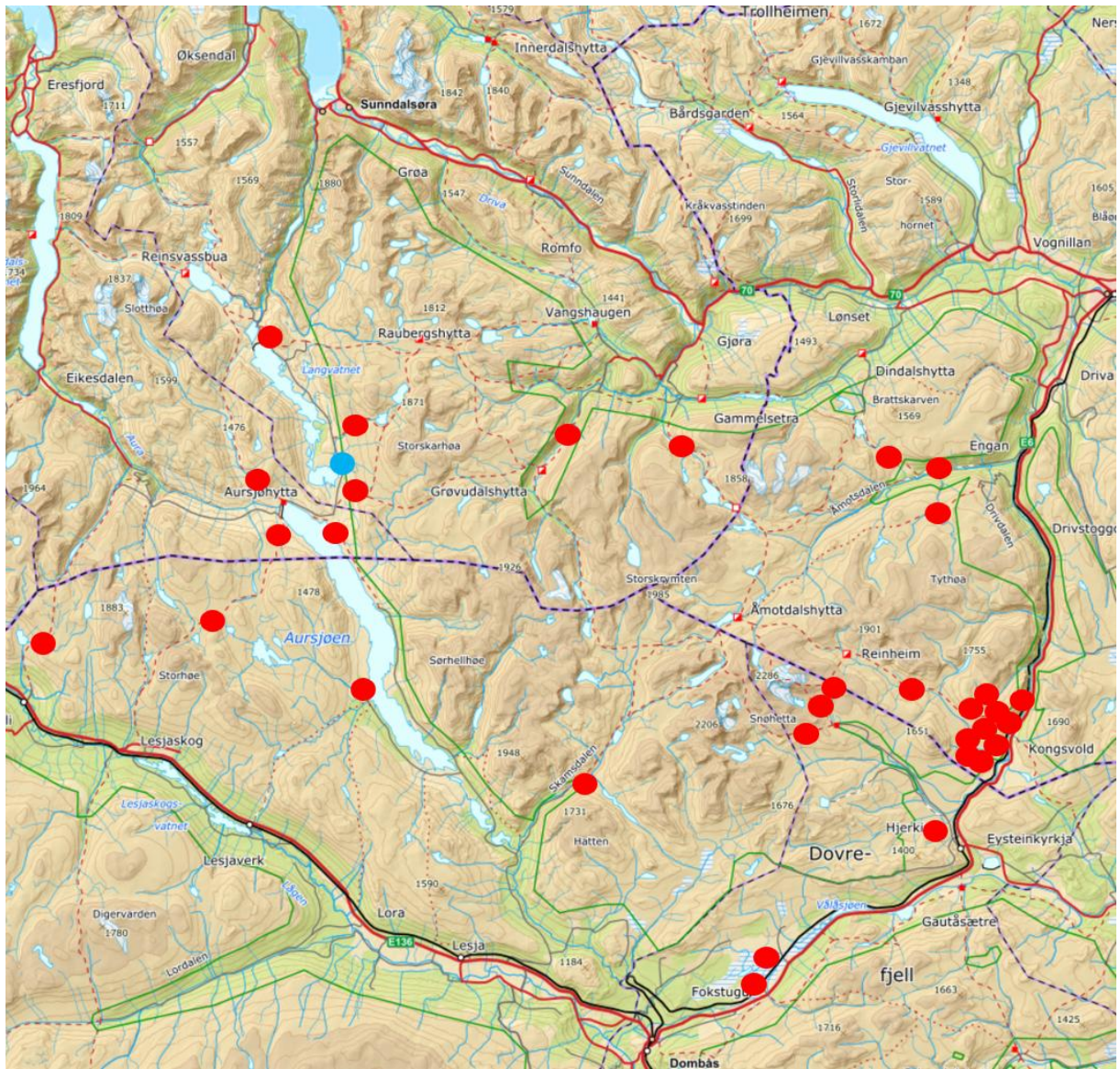
Takk til Espen Rusten, Ingrid Sønsterud Myren, Einy Brænd, Maja Arnekleiv, Tilde Øyjordet, Jonas Janss Haugli, Marit Haug Røynlid og Norunn Brøste Kjersem for feltarbeid.

Tabell 1. Oversikt over tellelokaliteter i Snøhetta 2025.

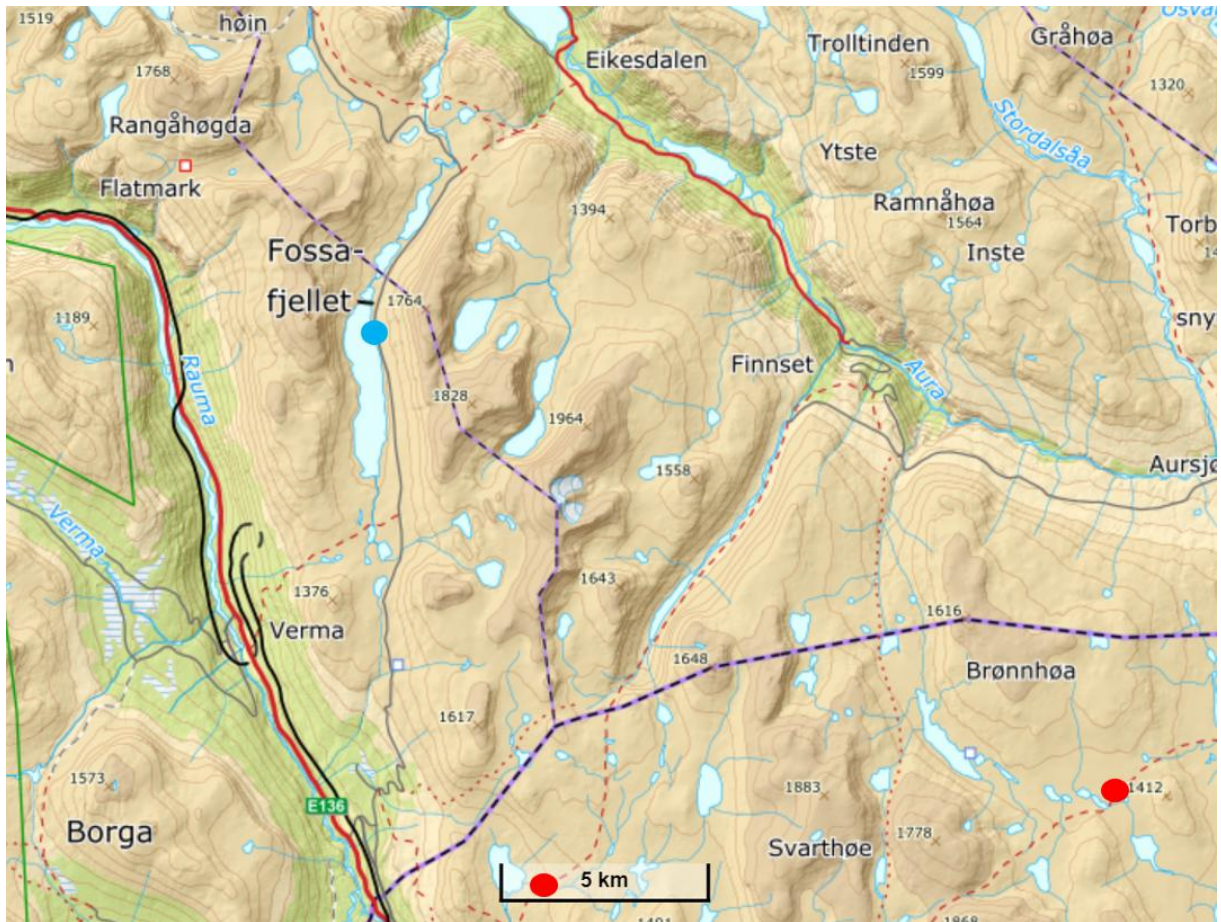
Type	Tellennummer	Lokalitet	Kommentar
Trafx	205	Gåsbue	
Trafx	215	Vetaberget Lesjaskog	
Trafx	303	Torbudalen, vegen	
Trafx	308	Sandgrovegen	
Trafx	234	Skamsdalen	
Trafx	218	Kongsvold mot Høgsnyta	
Eco	2940	Åmotsdalen	
Eco	2954	Seterfjellet fjellrev	
Eco	3009	Grøvdalen	Ingen data, ny sensor
Eco	2778	Middagshjellan, Skirådalen	
Eco	2780	Bjørli-Gravdalen Bøvervatn	
Eco	3006	Krøsa	
Eco	2777	Ausjøhytta-Naustvika	
Eco	3008	Inn til Håkådalsvatnet	
Eco	2781	Aursjøhytta-Stordalen	
Eco	2544	Ausjødammen vest	
Eco	3708	Kongsvold inn mot Stropsljødalen, Nystugguhøe	Oppdaget, feil i data
Eco	2936	Kongsvold inn mot Nystuggudalen/Salen	Teknisk feil
Eco	1078	Bandranden/Stropsljødalen	Estimerte data periode
Eco	2782	Snøheim-Reinheim	
Eco	2943	Snøheim-Snøhetta	
Eco	2937	Snøheim-Svånådalen	
Eco	NP styret	Grønbakken mot Kolla, sør	
Eco	NP styret	Moskussti, bekkedal mellom Grønbakken og Kongsvoldstien	
Eco	NP styret	Sti nord for Kaldvella mot Hestgjeterhytta	
Eco	NP styret	Sti sør for Kaldvella mot Reinheim	
Eco	SNO	Kongsvold fjellstue	
Eco	SNO	Kongsvold stasjon	
Eco	SNO	Viewpoint Snøhetta	
Eco	SNO	Grønbakken	
Eco	SNO	Fokkstua naturreservat hovedsti	
Eco	SNO	Fokkstua naturreservat nord – finner ikke data	
Trafx	NINA	Miutjerntelet	

Tallene er angitt som totalt antall passeringer (inn/ut) i perioden 1. juli til 1. oktober 2025, 93 dager.

Korrigerede data er forklart og angitt for hver teller.



Figur 1. Tellelokaliteter sentralt i Snøhetta villereinområde i 2025.



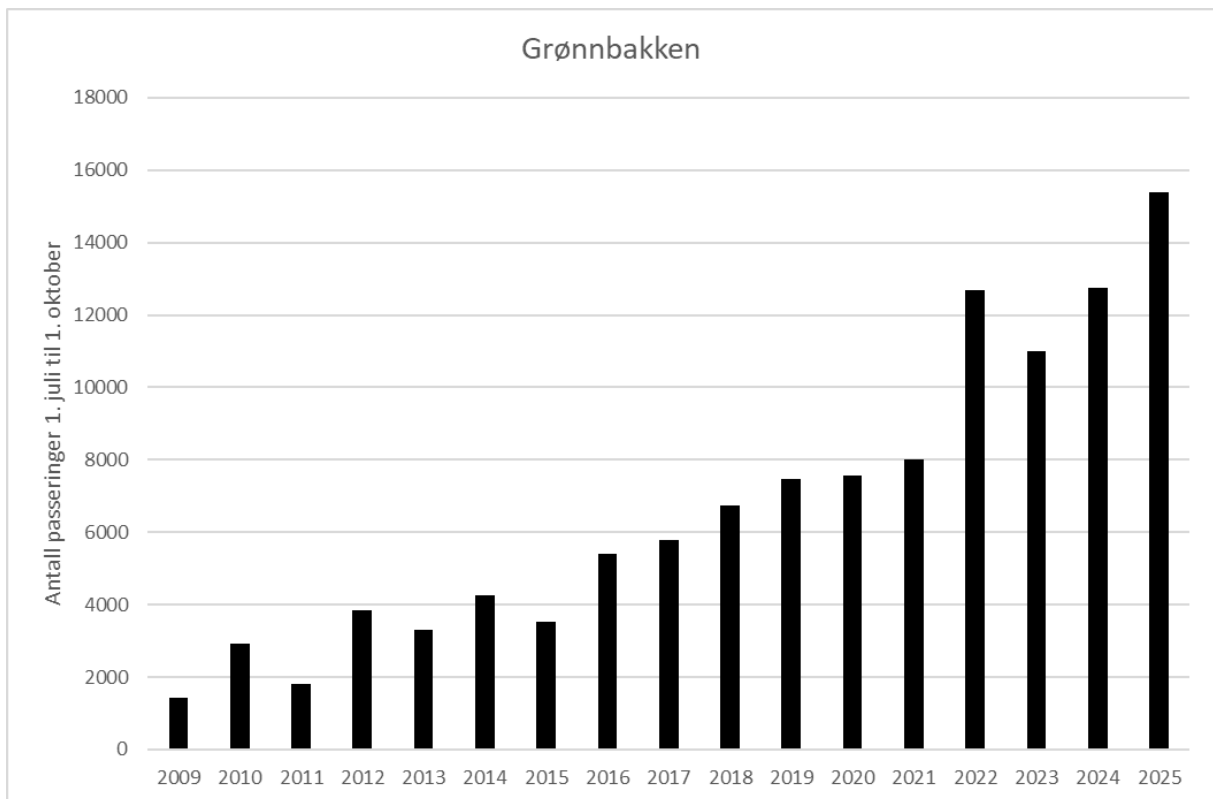
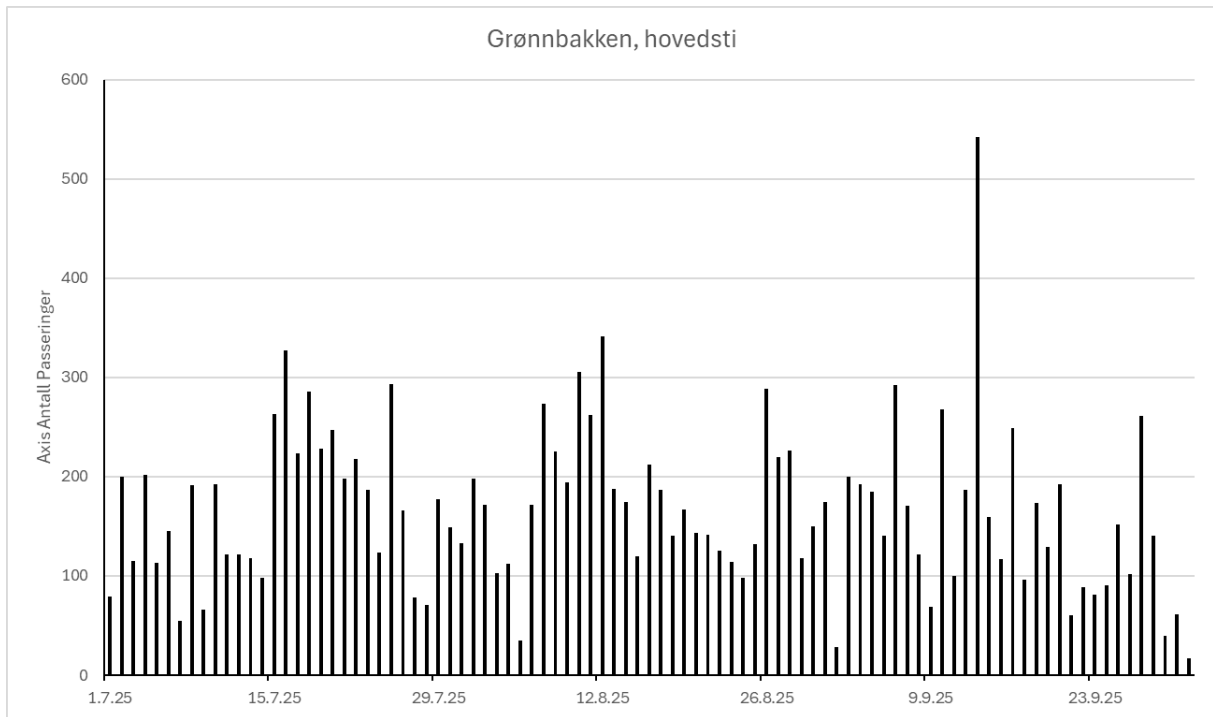
Figur 1. Tellelokaliteter i lengst vest i 2025.

Grønnbakken

Sum: 15398

Middelverdi: 166

Maks: 542

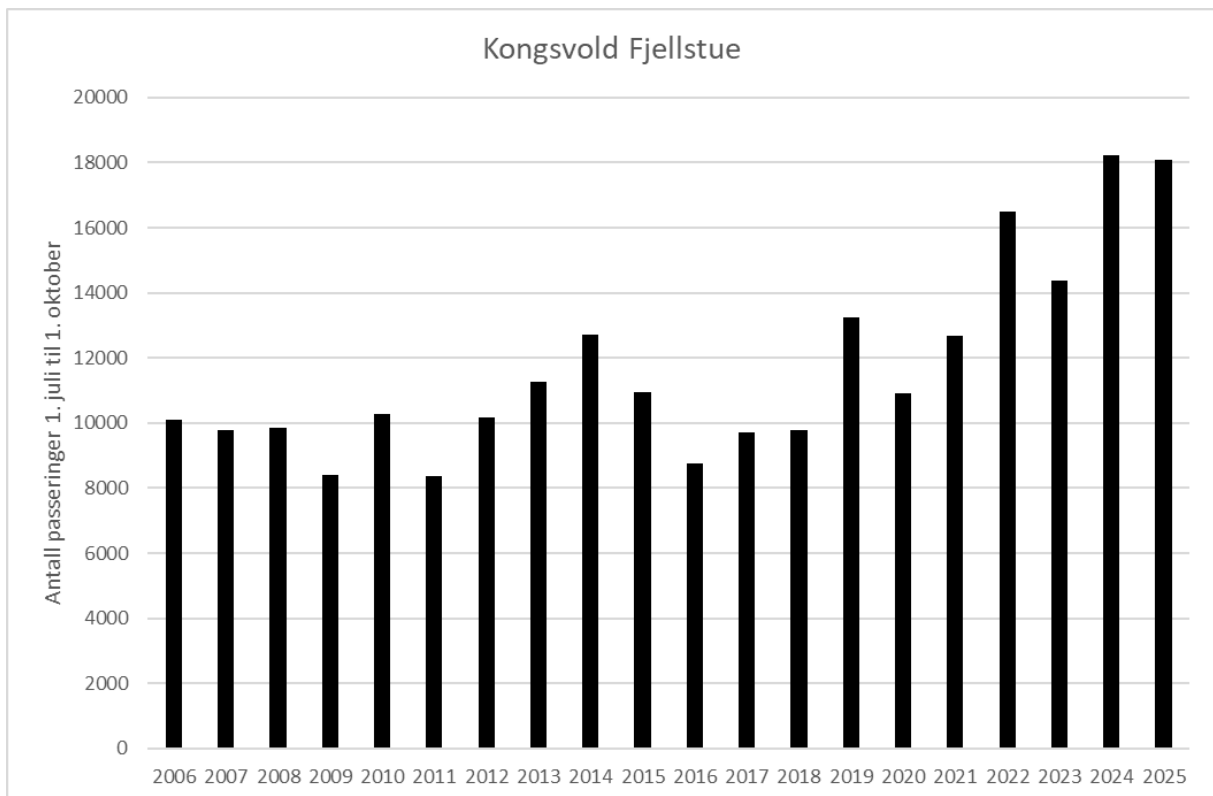
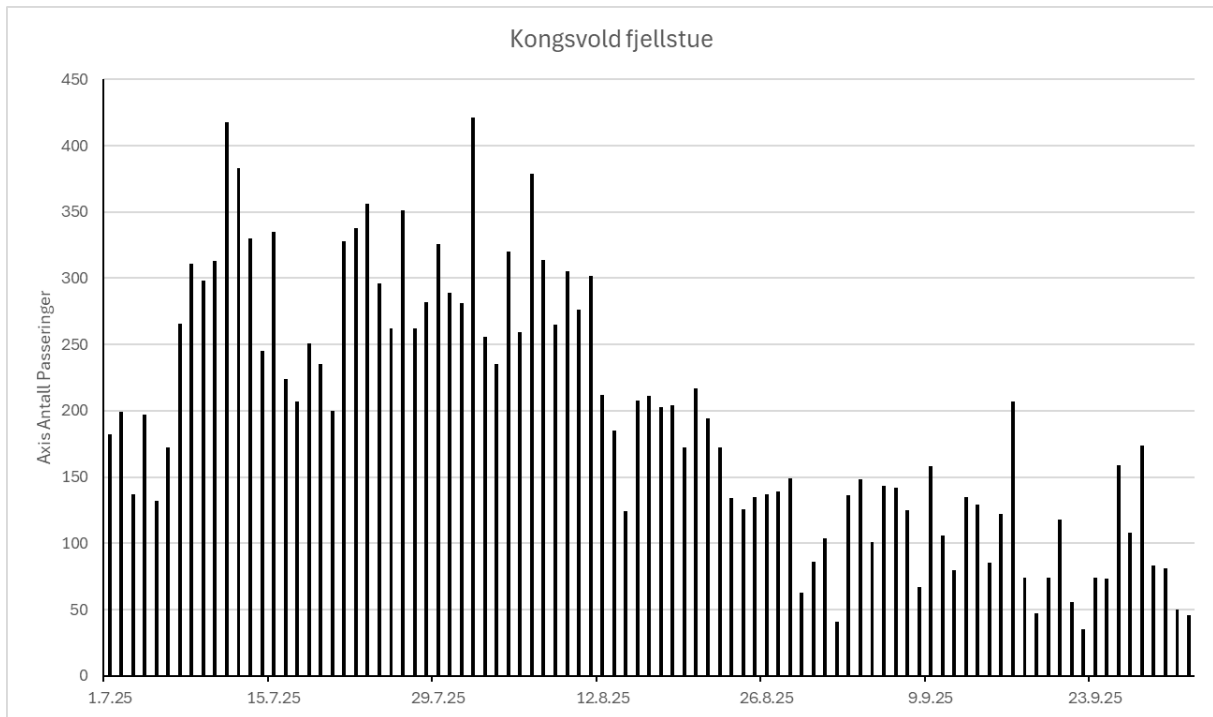


Kongsvold fjellstue

Sum: 18090

Middelverdi: 195

Maks: 421

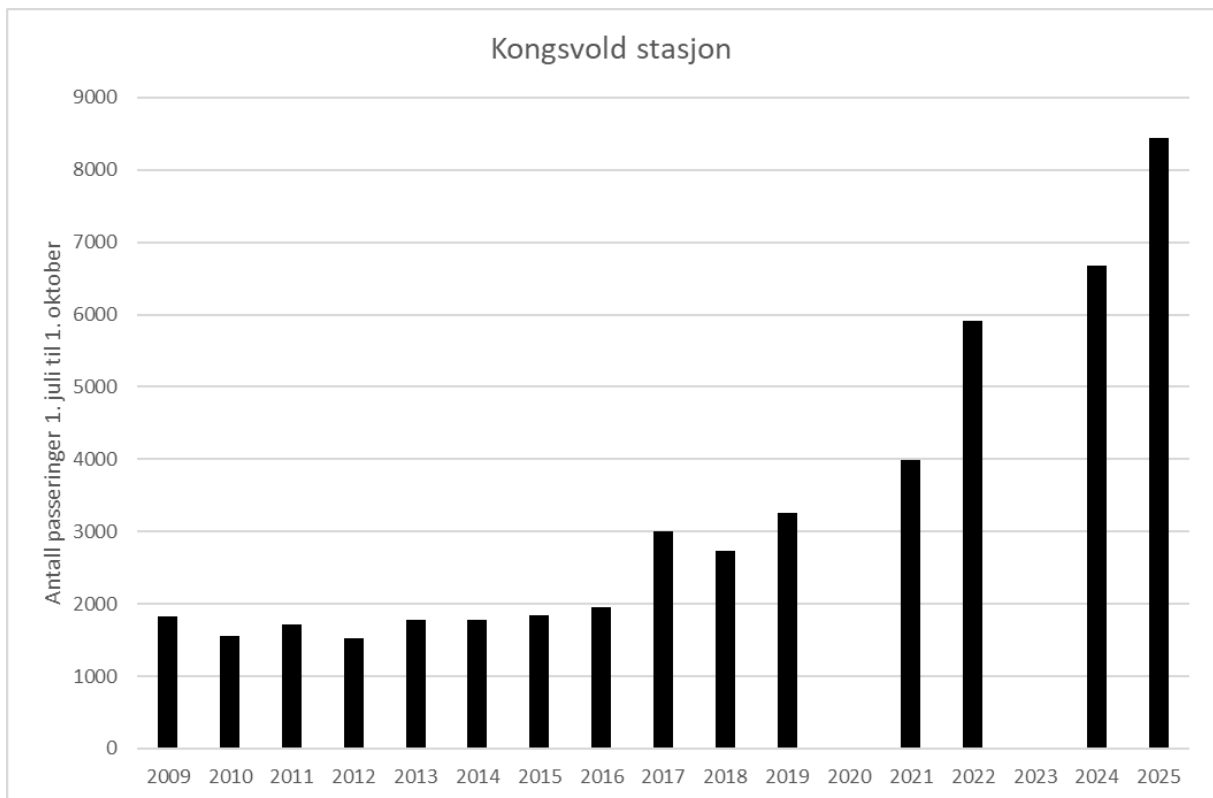
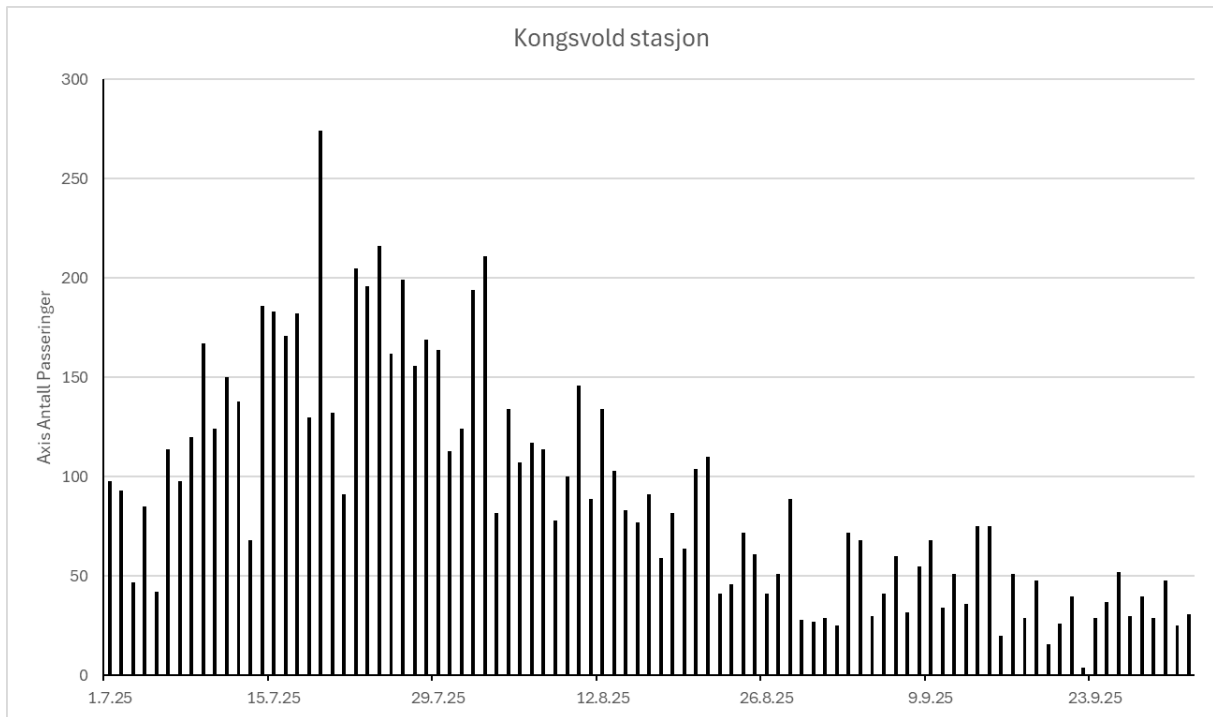


Kongsvold stasjon

Sum: 8438

Middelverdi: 91

Maks: 274

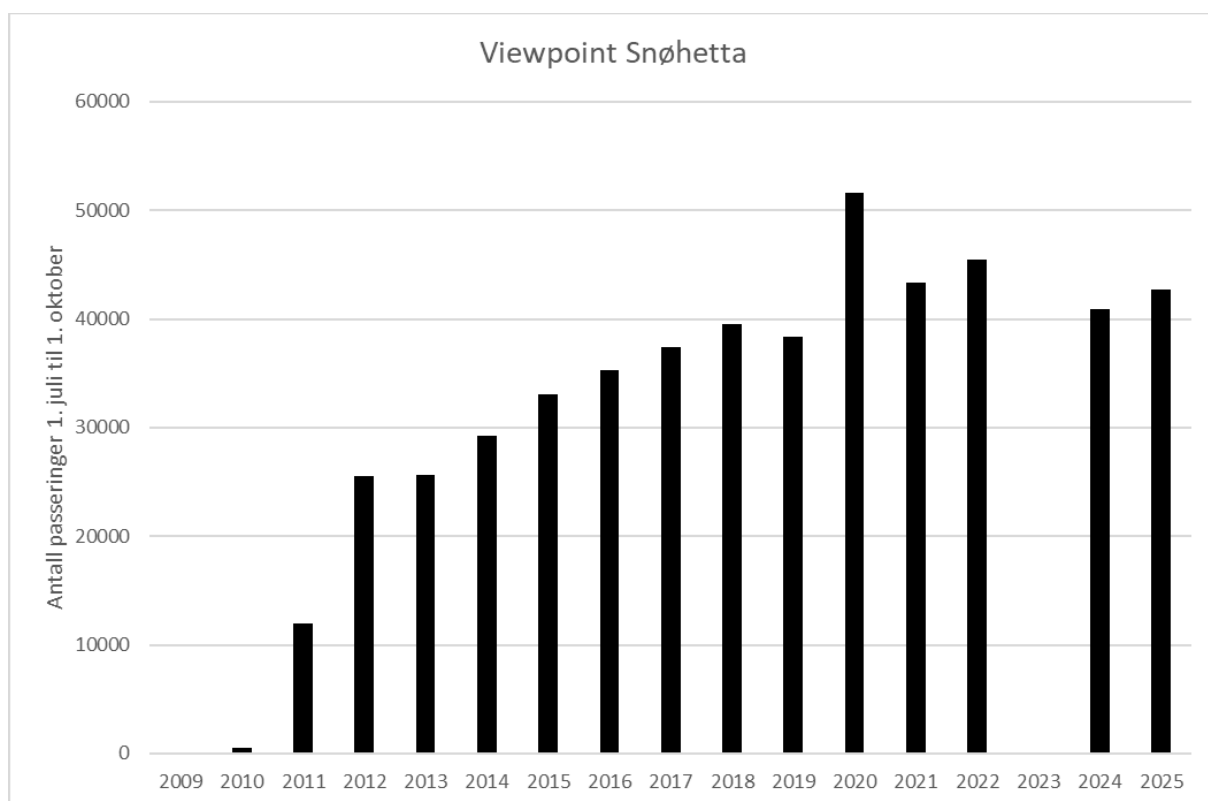
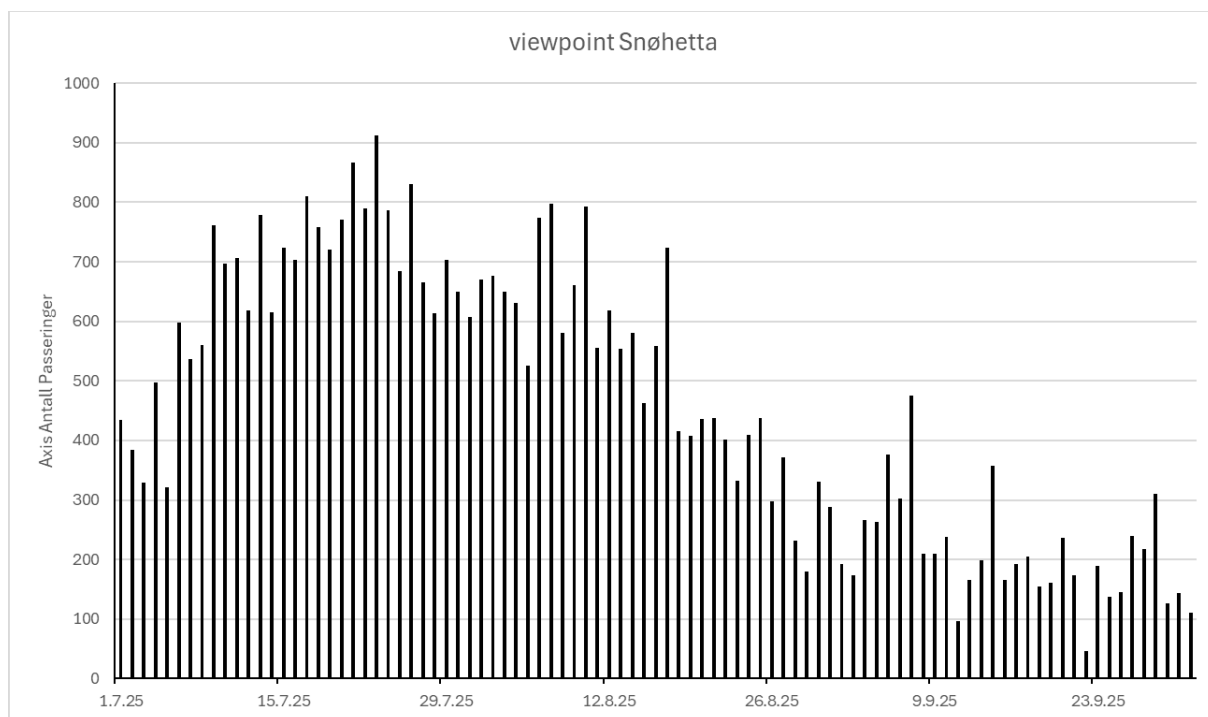


Viewpoint Snøhetta

Sum: 42698

Middelverdi: 459

Maks: 912

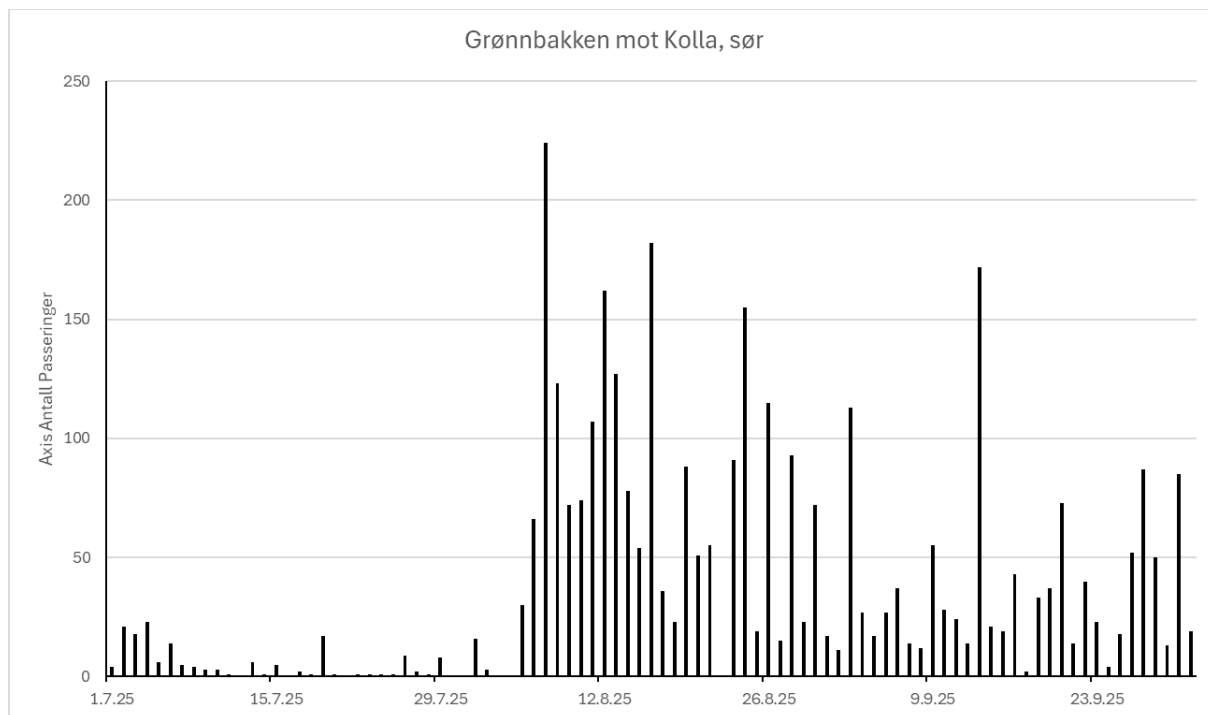


Grønnbakken mot Kolla, sør

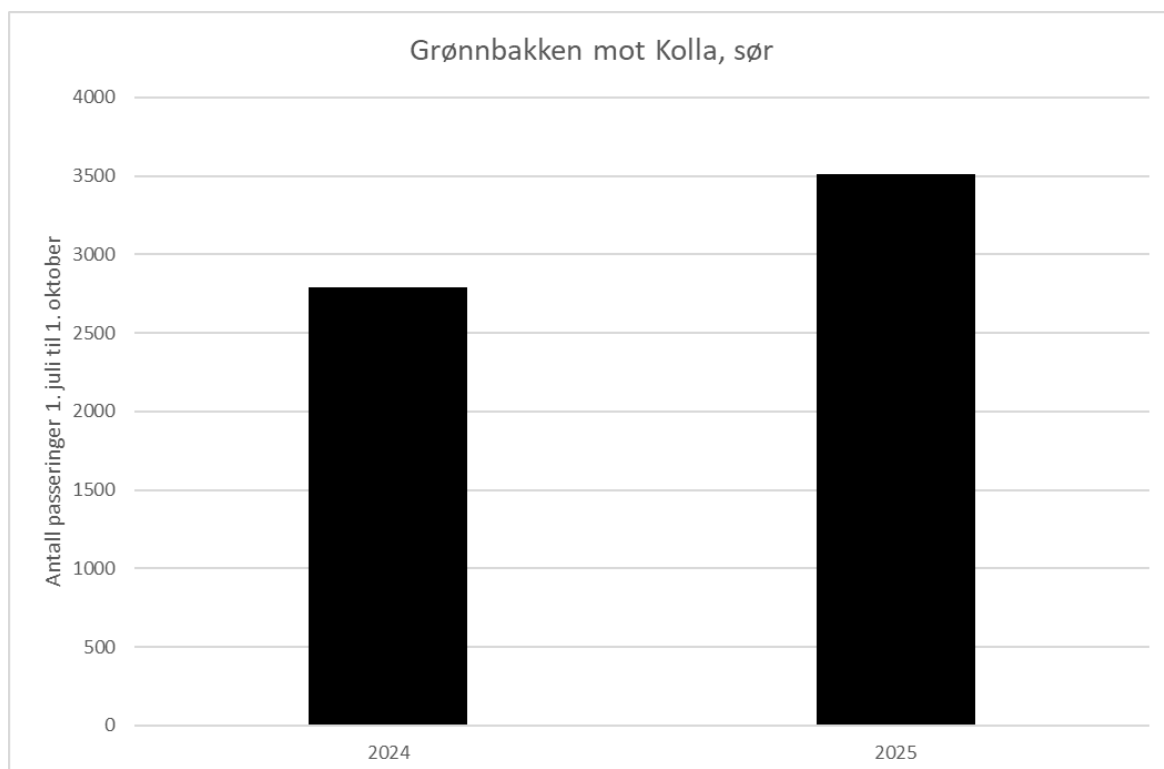
Sum: 3514

Middelverdi: 38

Maks: 224



Samme forløp i sesongen som i 2024. Korrigert 16.8.

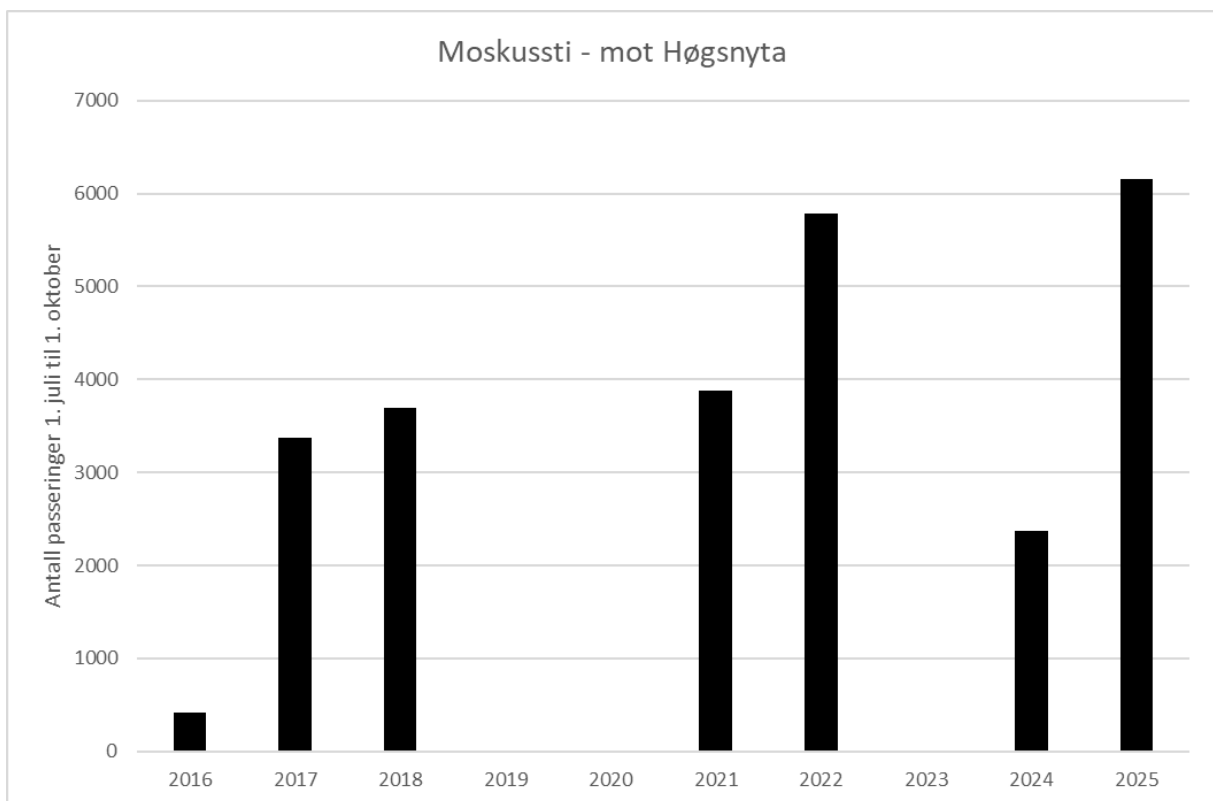
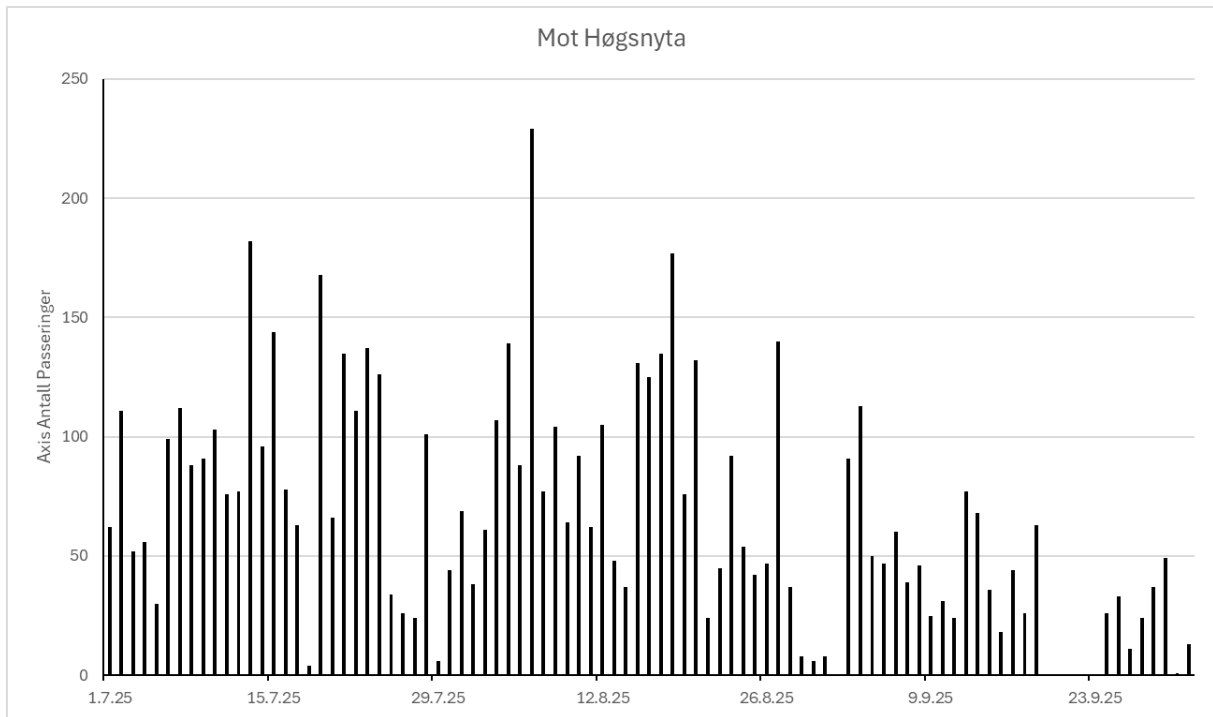


Mot Høgsnyta

Sum: 6153

Middelverdi: 66

Maks: 229



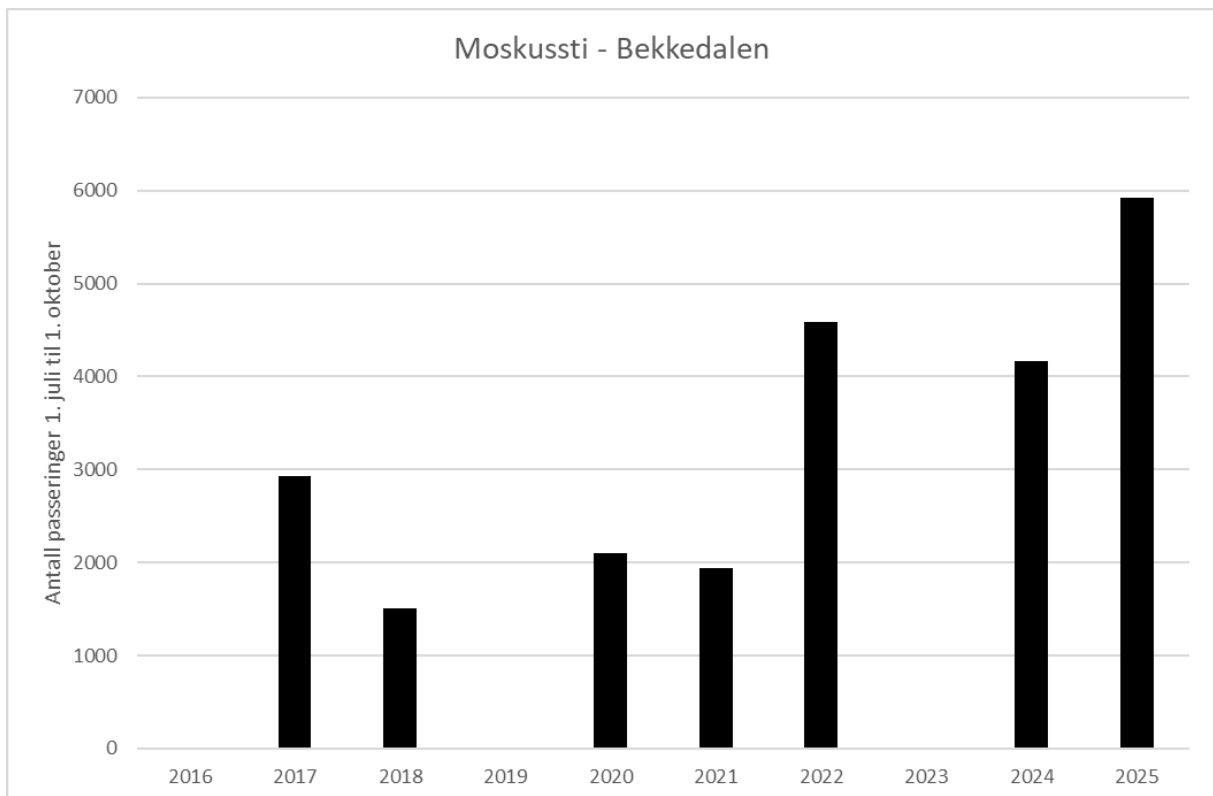
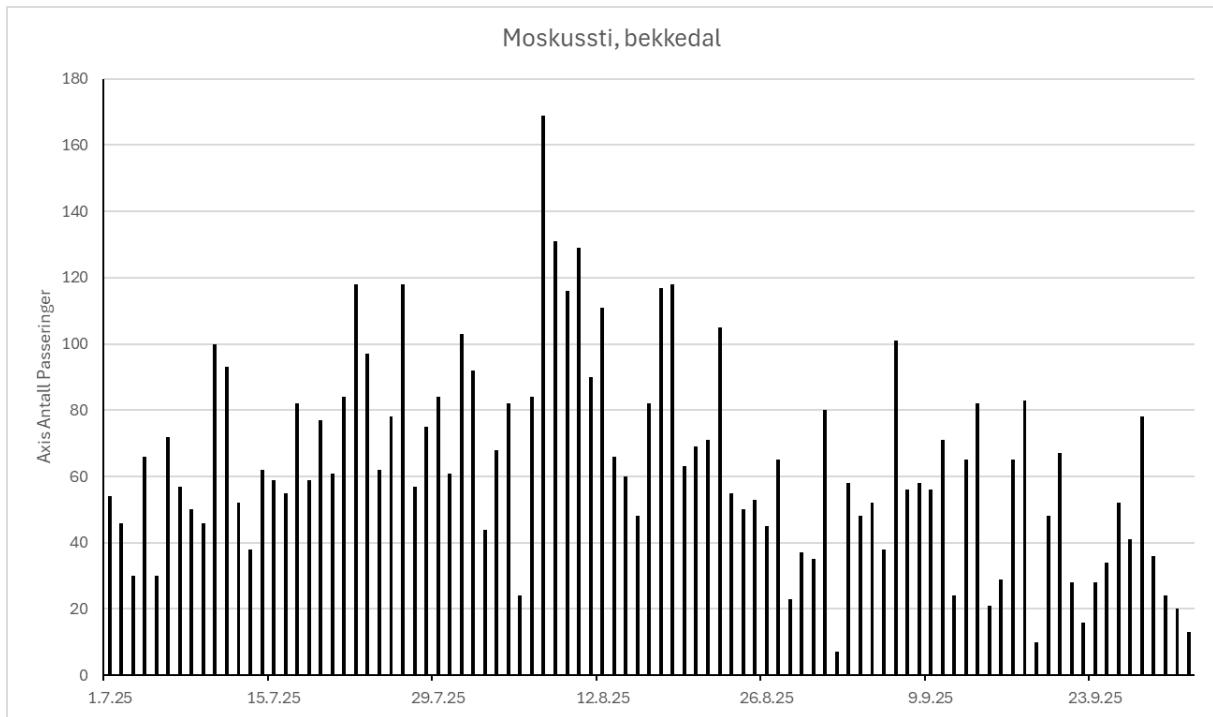
Det må være feil i 2024 data. Klarer ikke å finne feilen.

Moskussti, bekkedal

Sum: 5917

Middelverdi: 64

Maks: 169

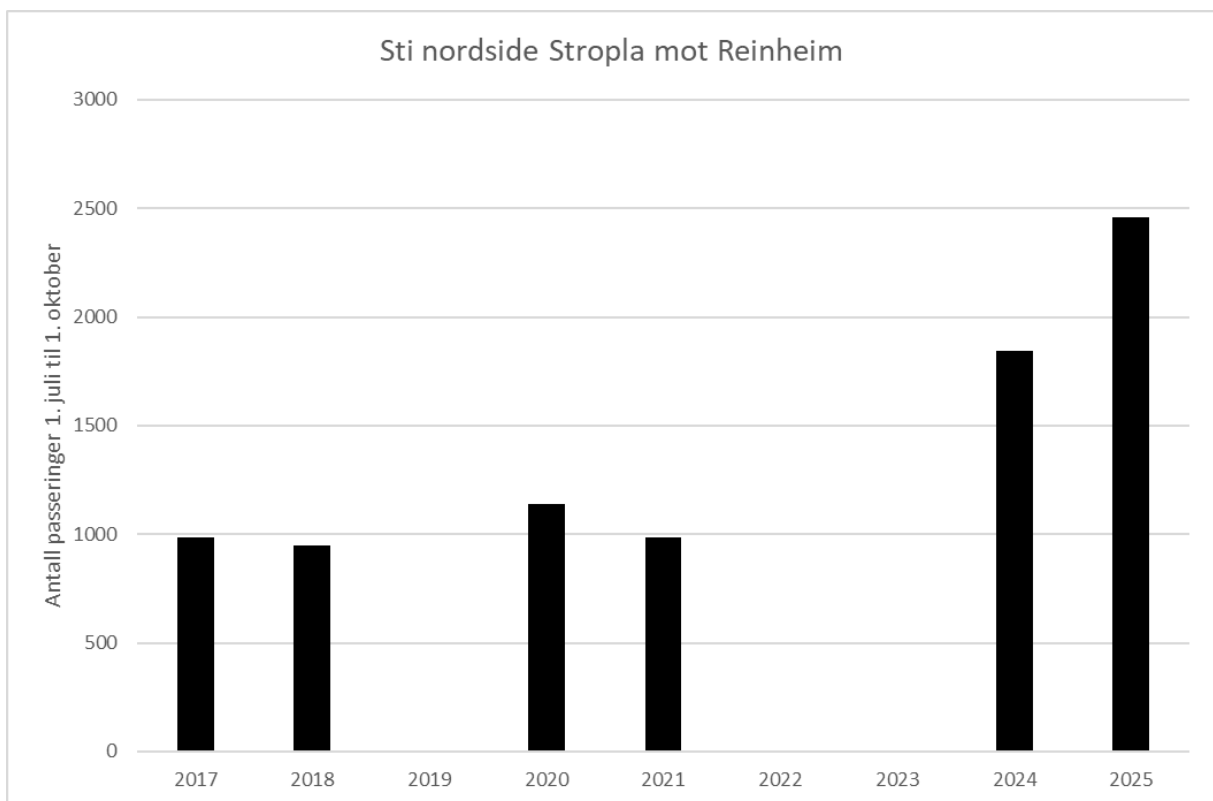
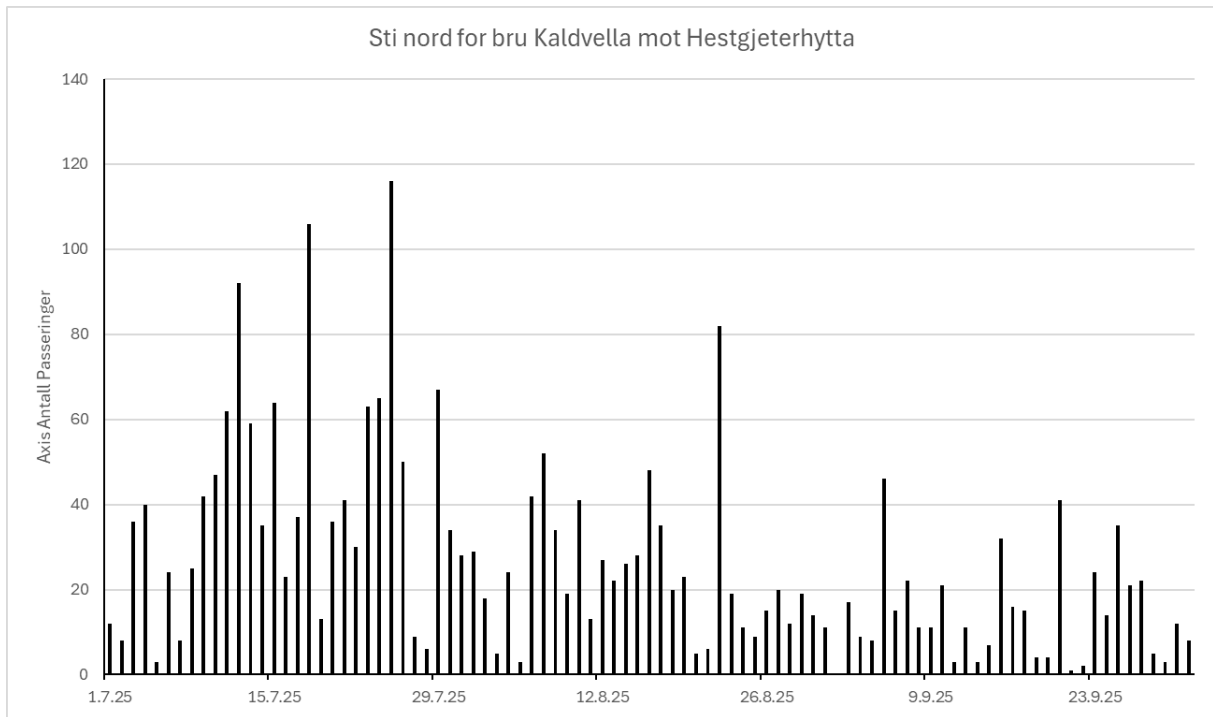


Sti nord for bru Kaldvella mot Hestgjeterhytta

Sum: 2456

Middelverdi: 26

Maks: 116

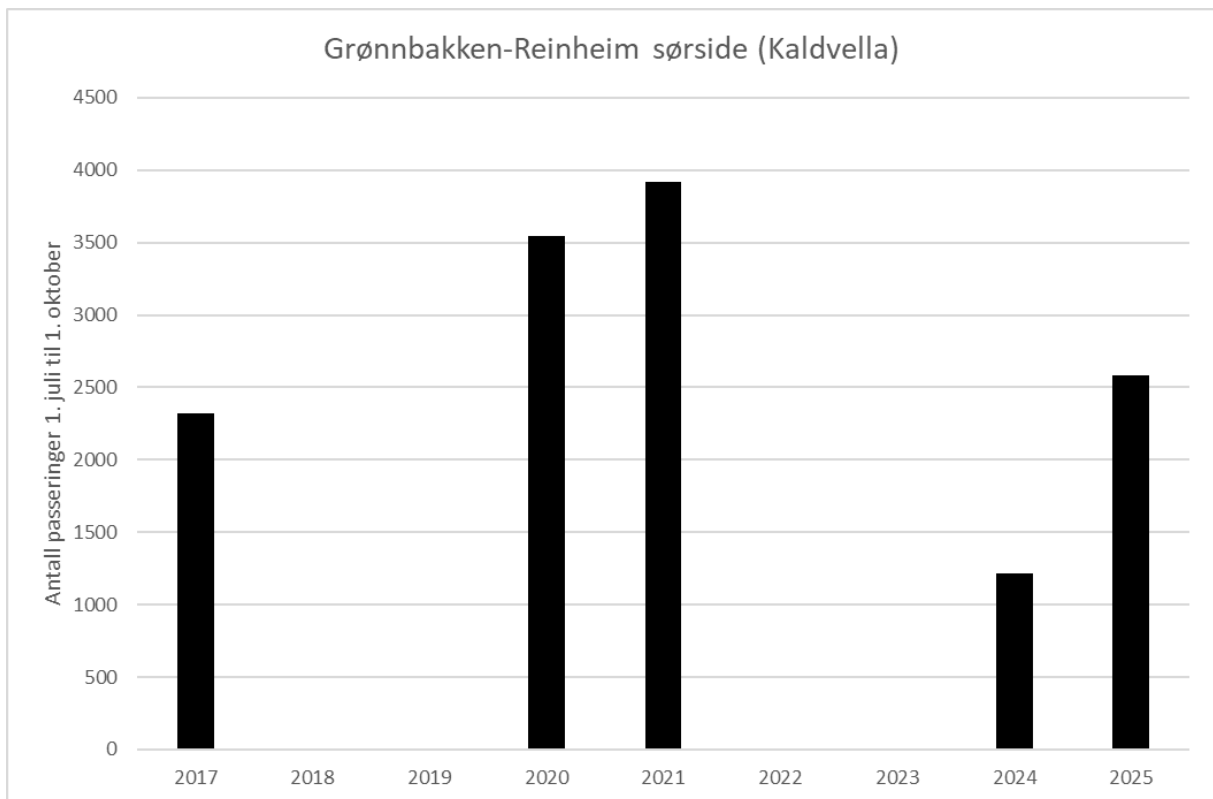
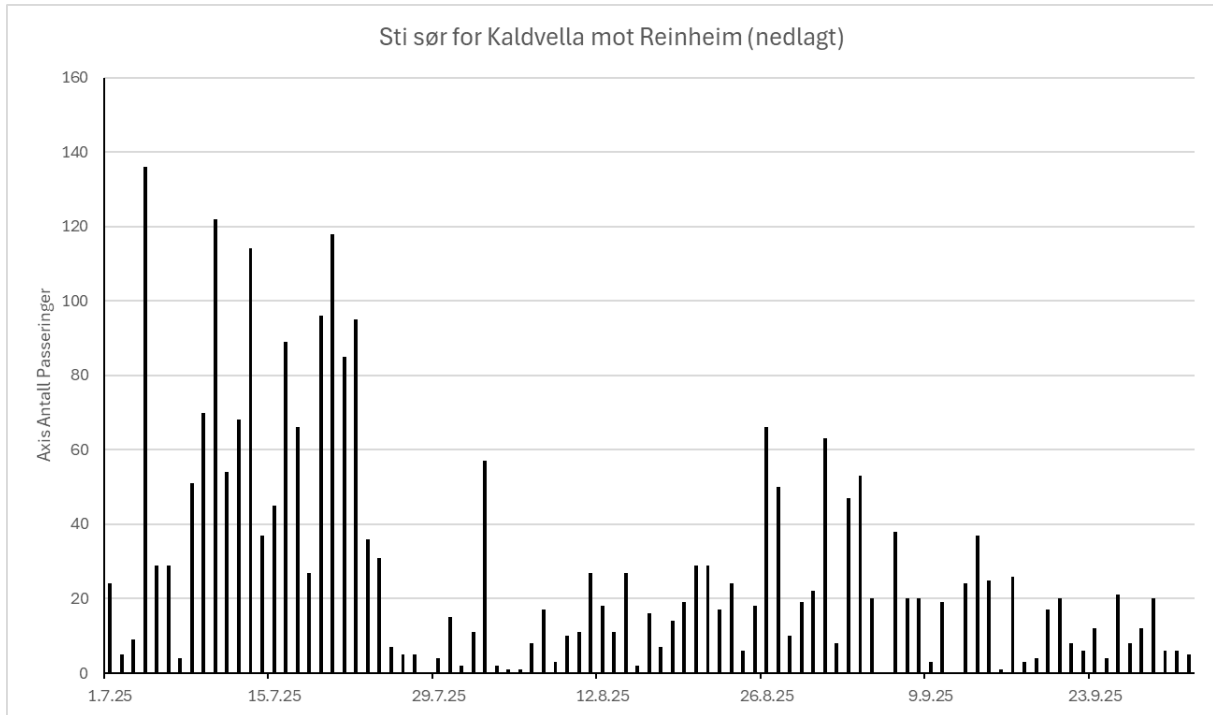


Sti sør for Kaldvella mot Reinheim (nedlagt)

Sum: 2586

Middelverdi: 28

Maks: 136



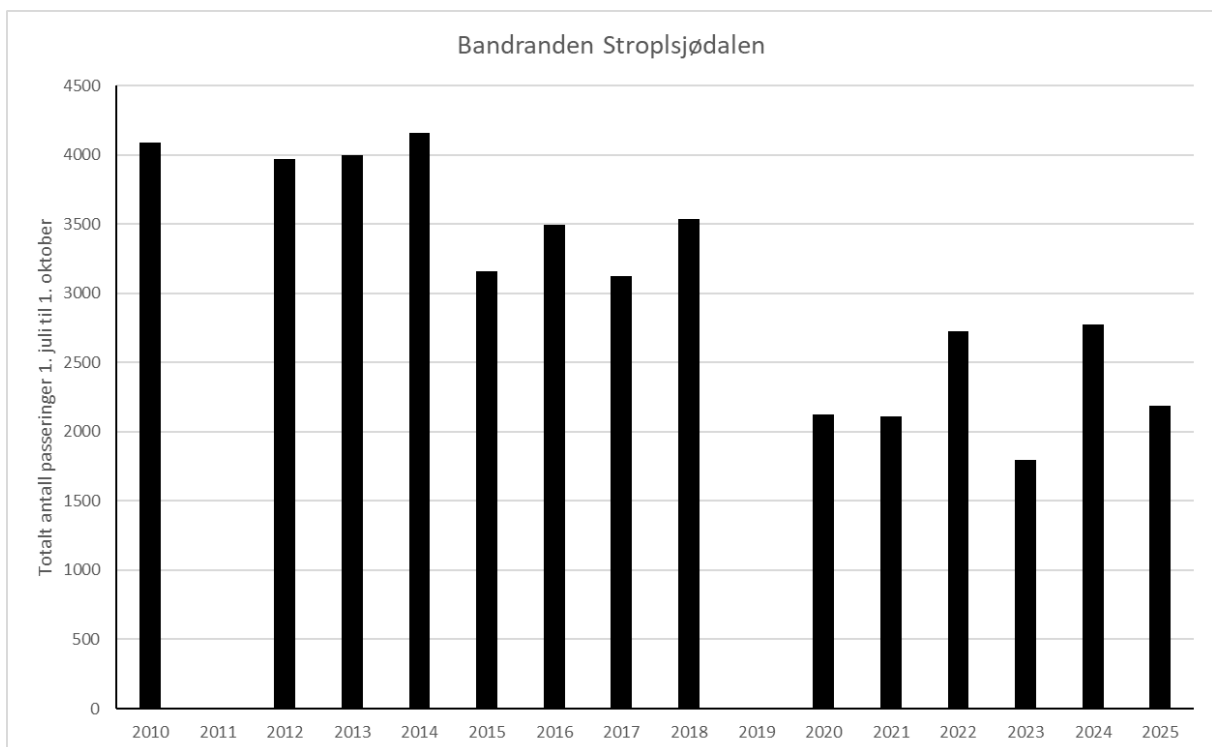
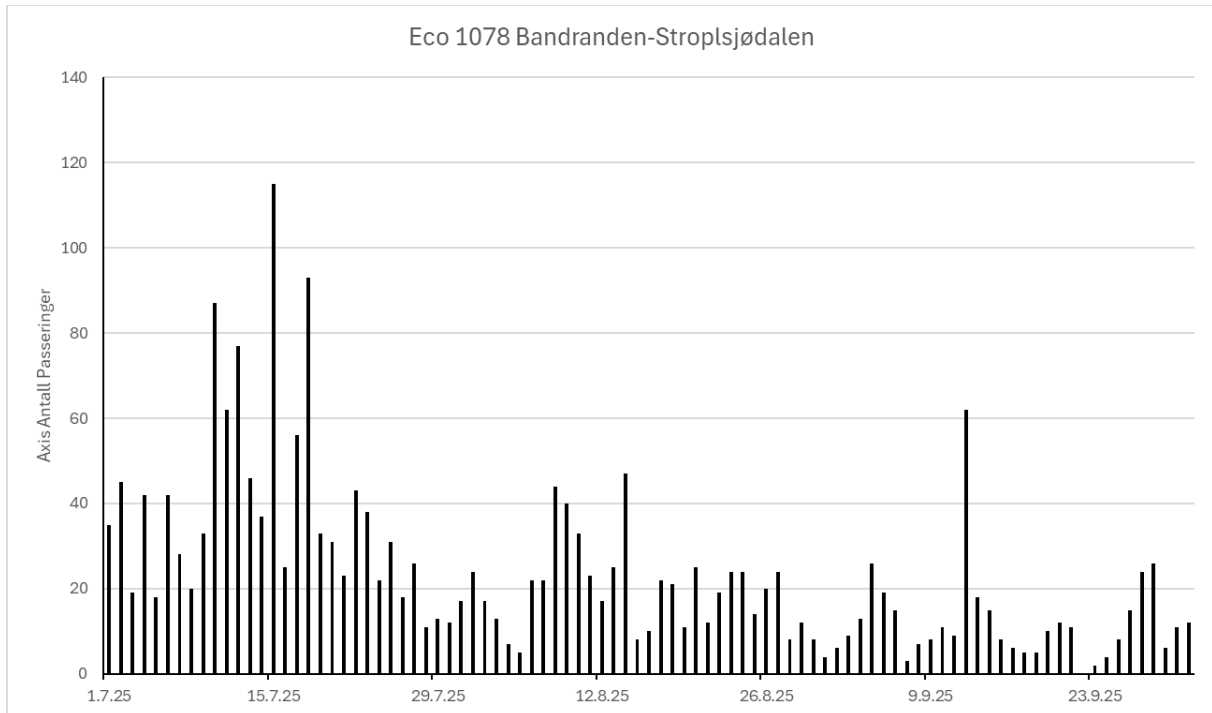
Stroplsjødalen ved Bandranden

Sum: 2189

Middelverdi: 24

Maks: 115

Telleren var ute av drift i perioden 19/7 til 20/8 – noe usikre data

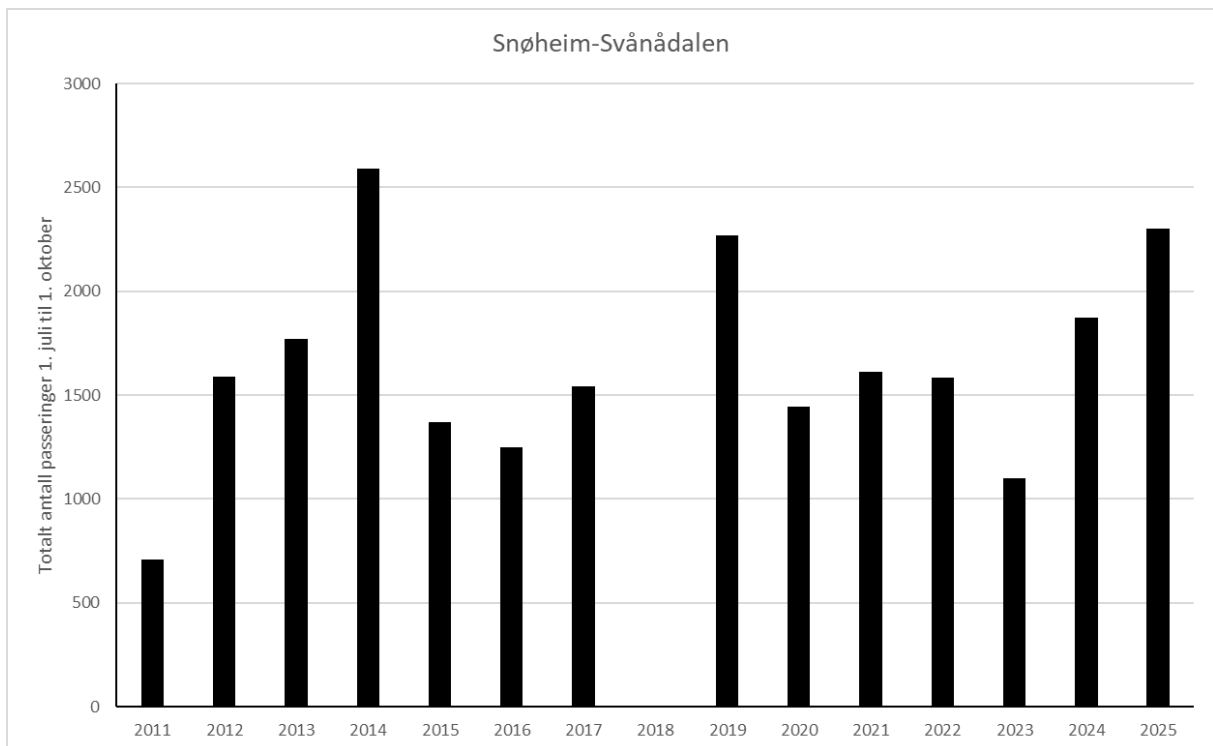
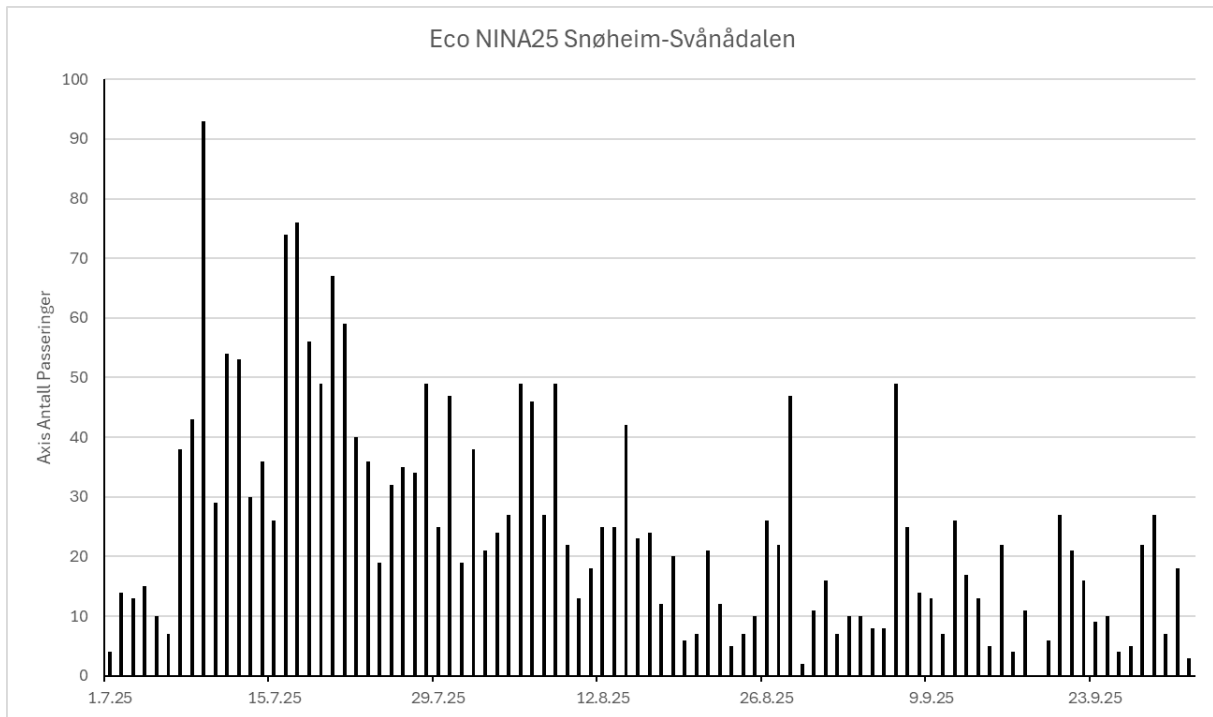


Snøheim-Svånådalen

Sum: 2303

Middelverdi: 25

Maks: 93

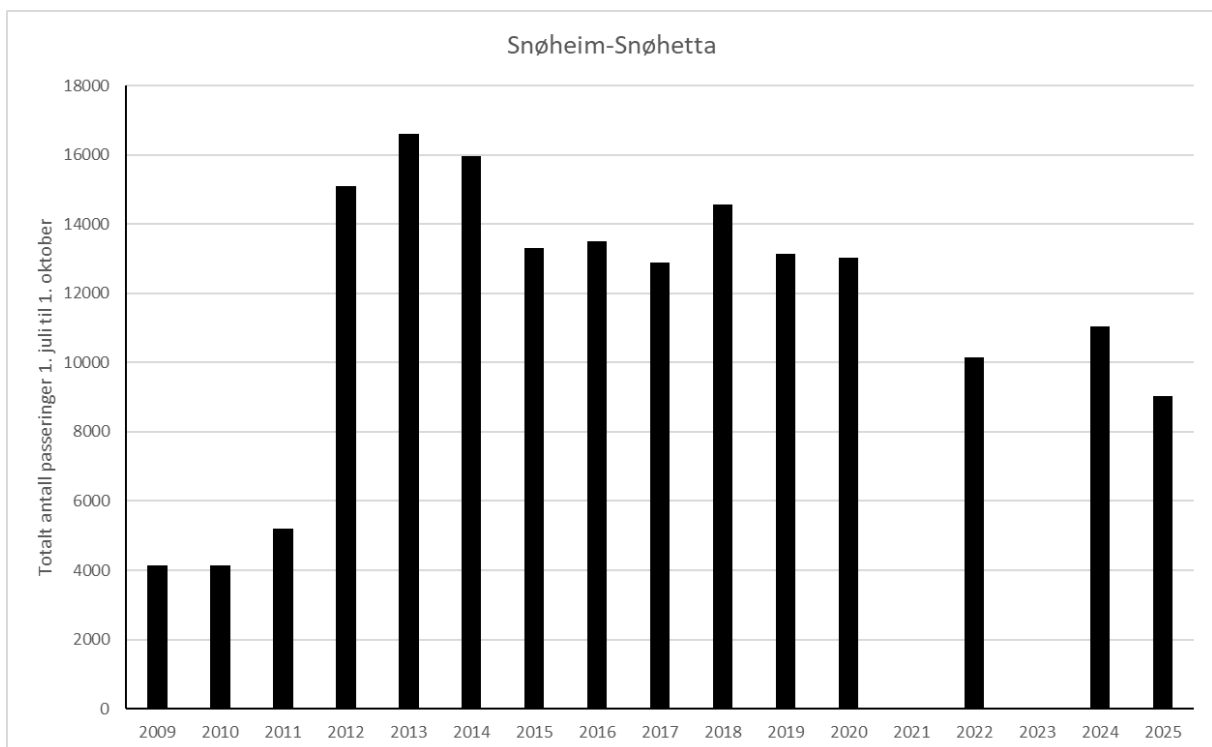
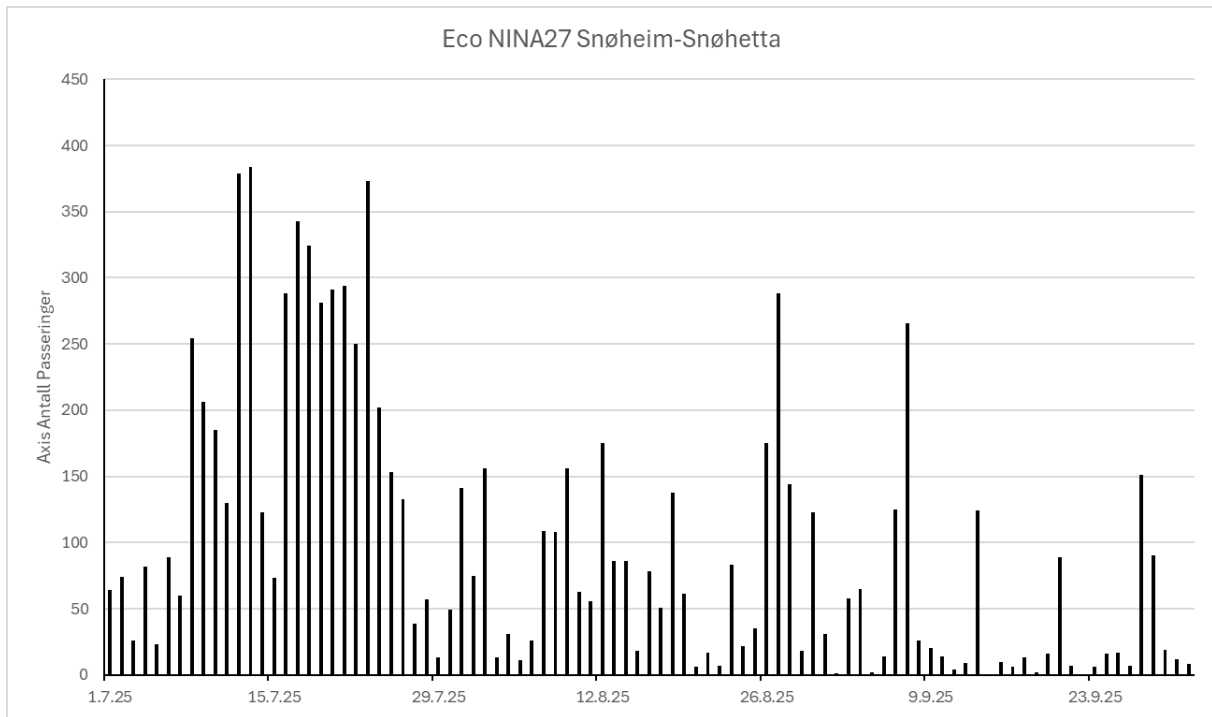


Snøheim-Snøhetta

Sum: 9026

Middelverdi: 97

Maks: 384

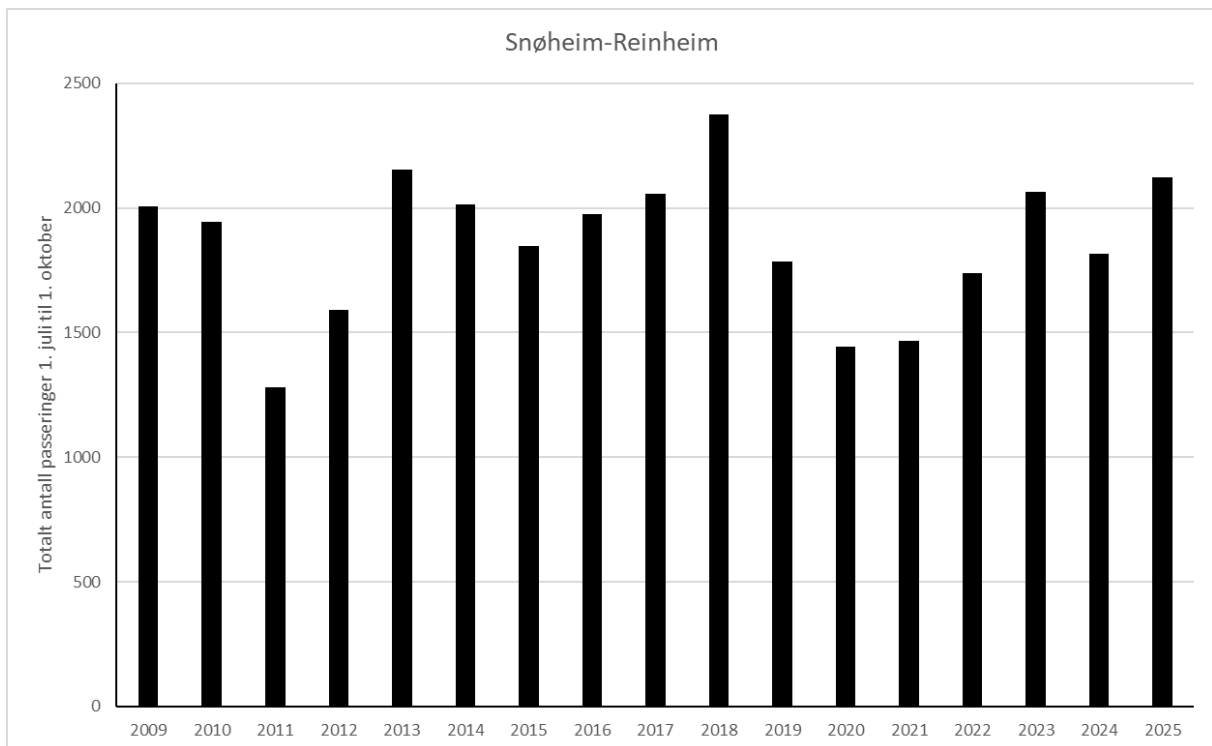
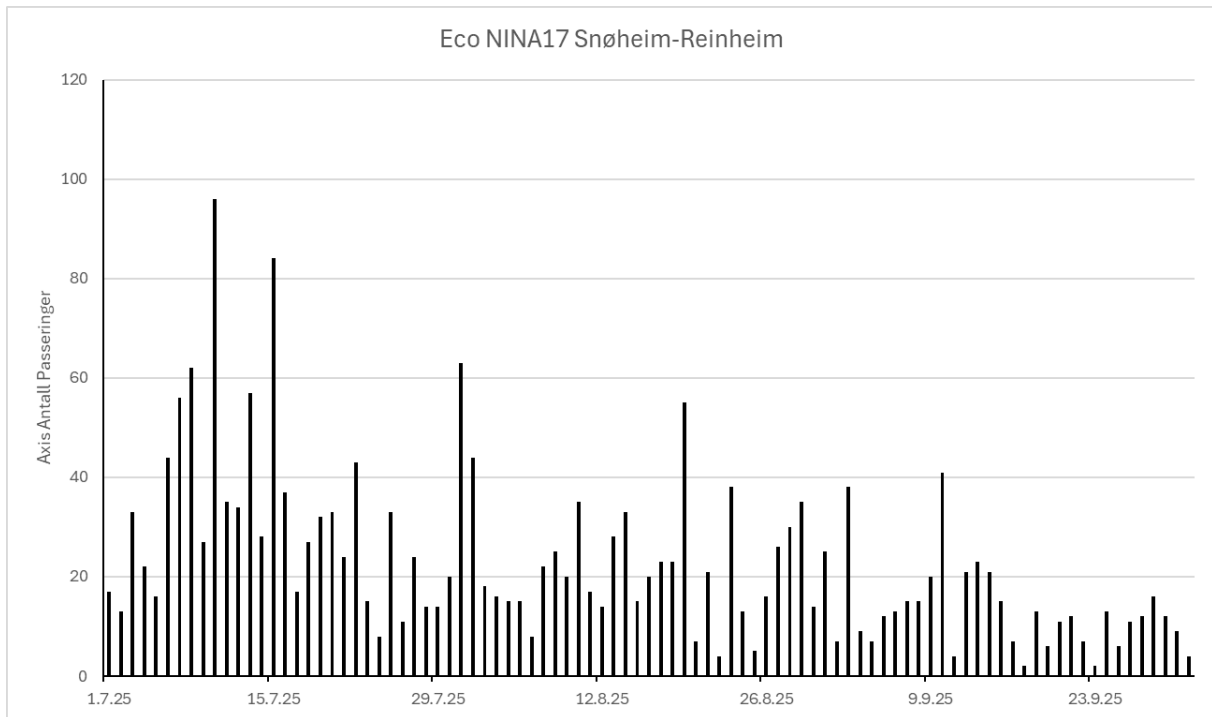


Snøheim-Reinheim

Sum: 2123

Middelverdi: 23

Maks: 96



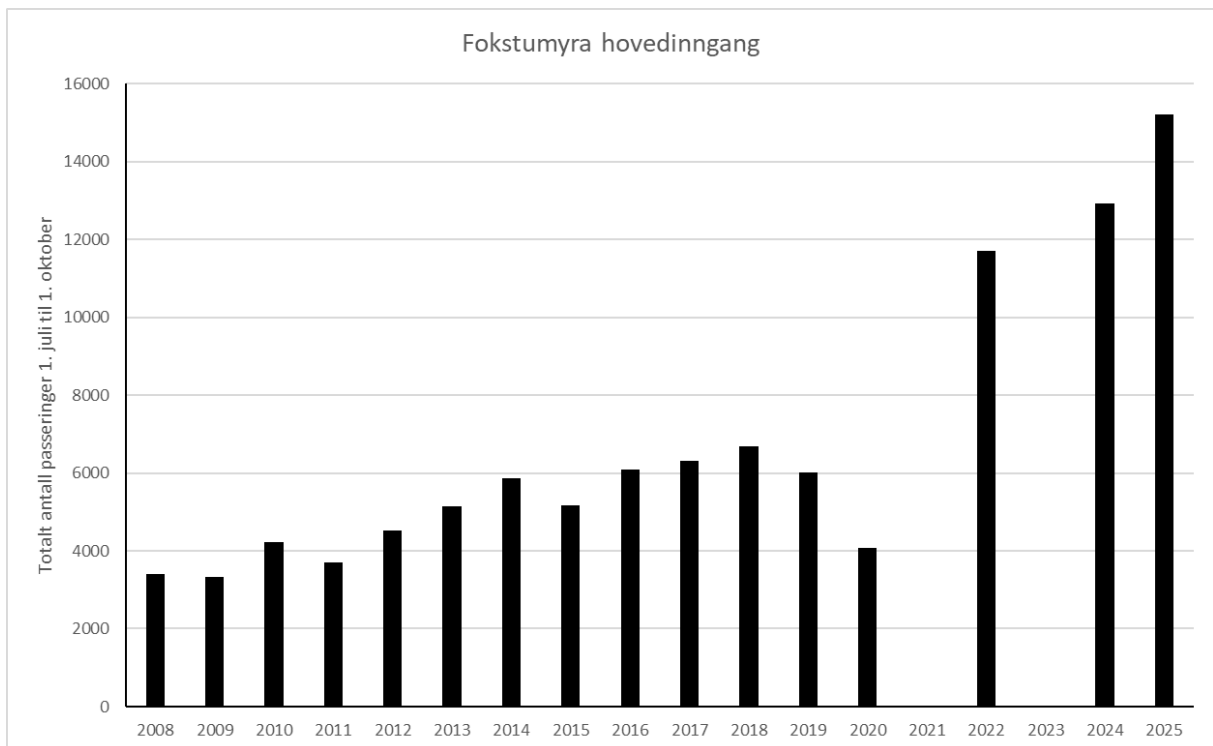
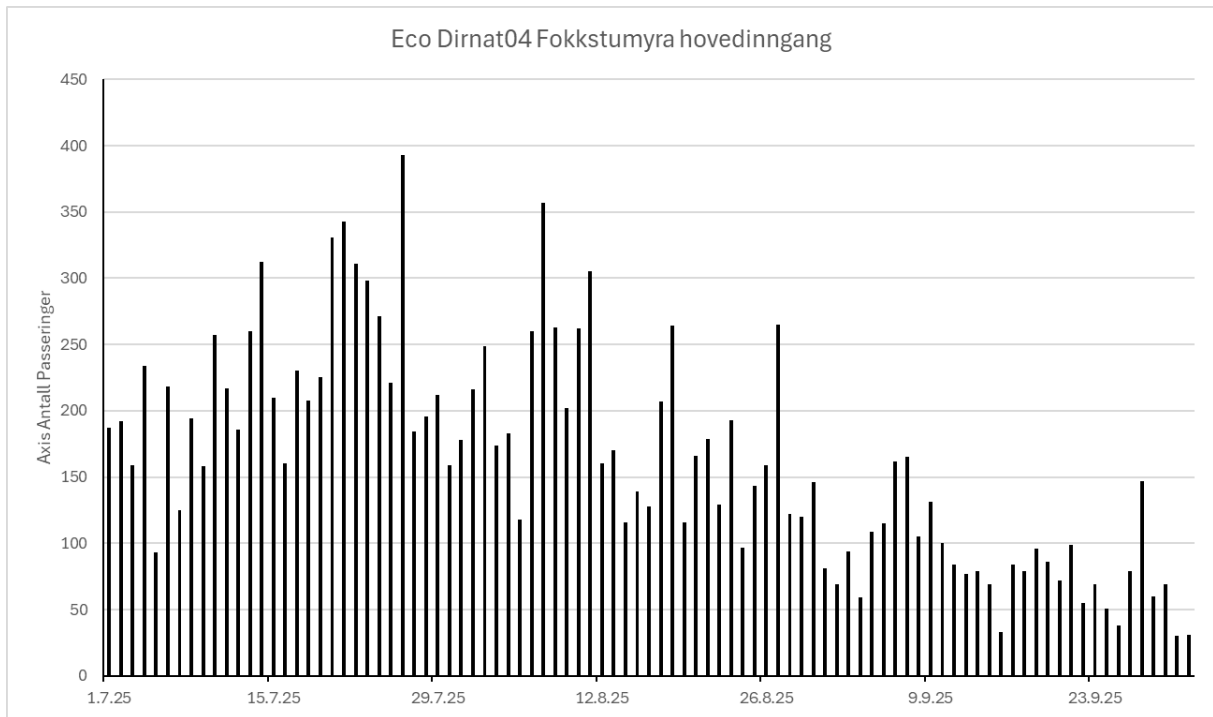
Telleren til Reinheim ble flytta fra sin gamle plass til nytt sted den 10. juli pga. at det begynte å komme en tydelig sti bak telleren der den sto tidligere. Telleren ble flytta ca. 1 km lengre nord den 10/7, omtrent på høyde med midten av Stridåtjønnen. Estimert tall 10. juli

Fokstumyra hovedinngang

Sum: 15207

Middelverdi: 164

Maks: 393

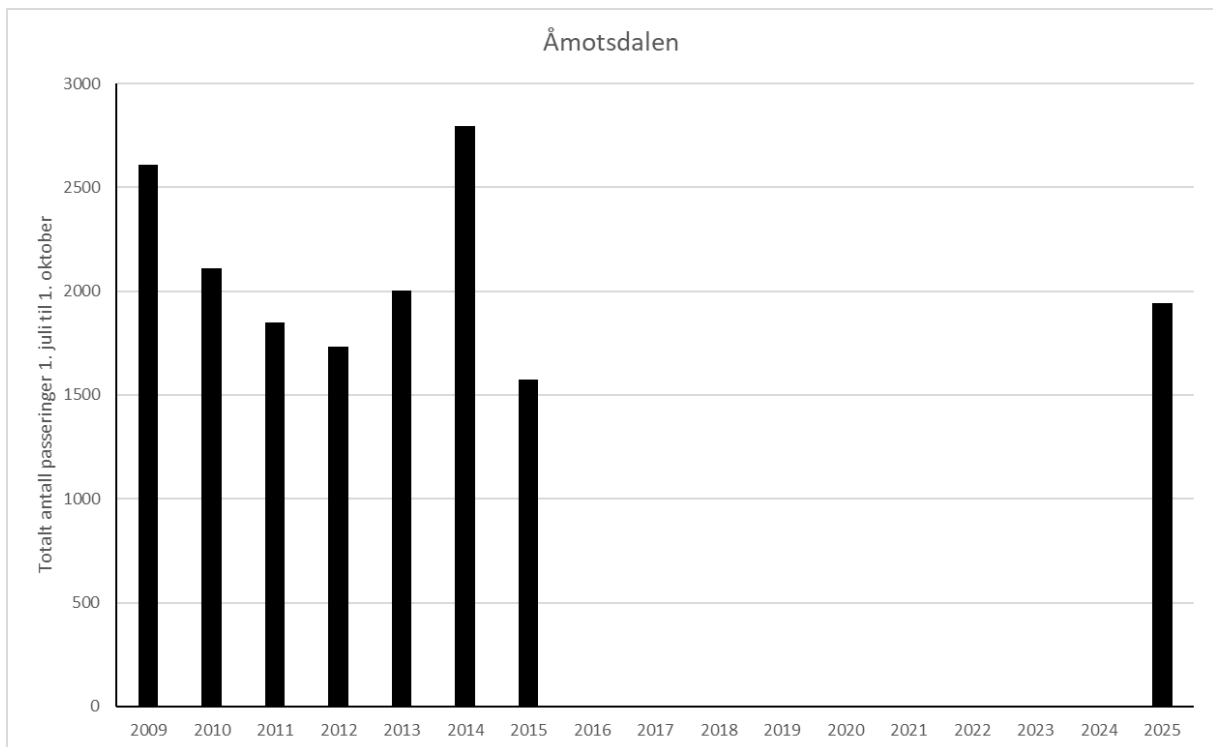
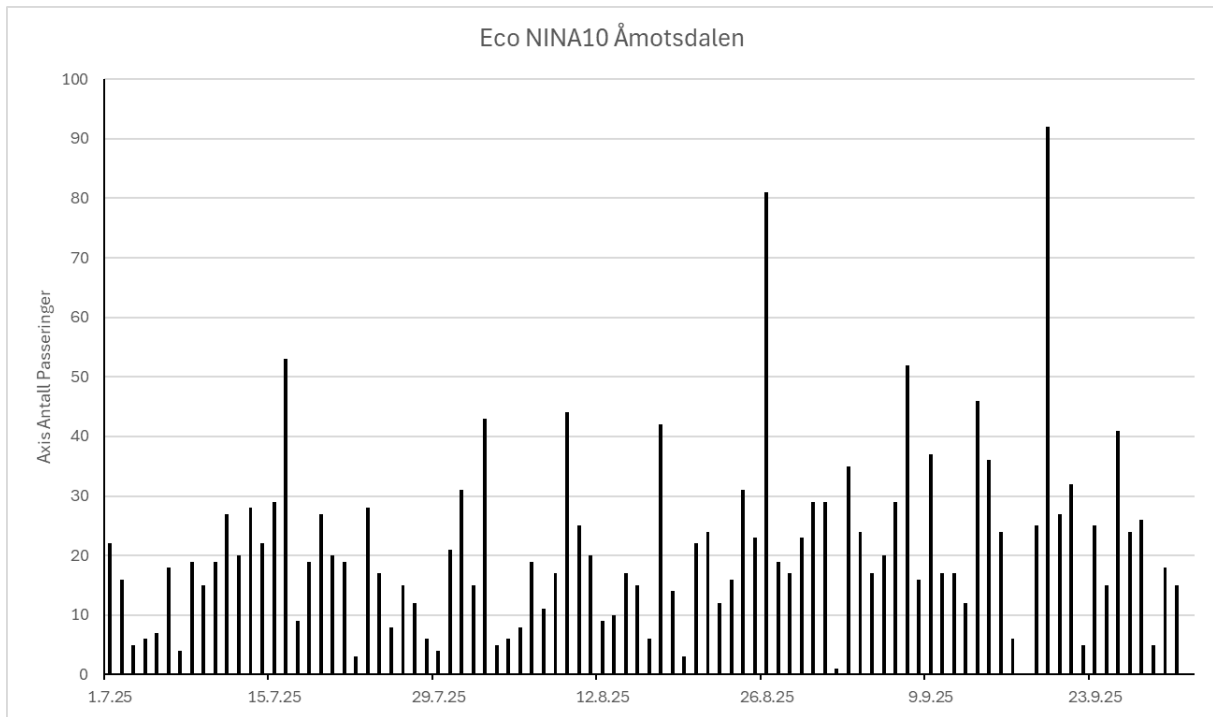


Åmotsdalen

Sum: 1943

Middelverdi: 21

Maks: 92

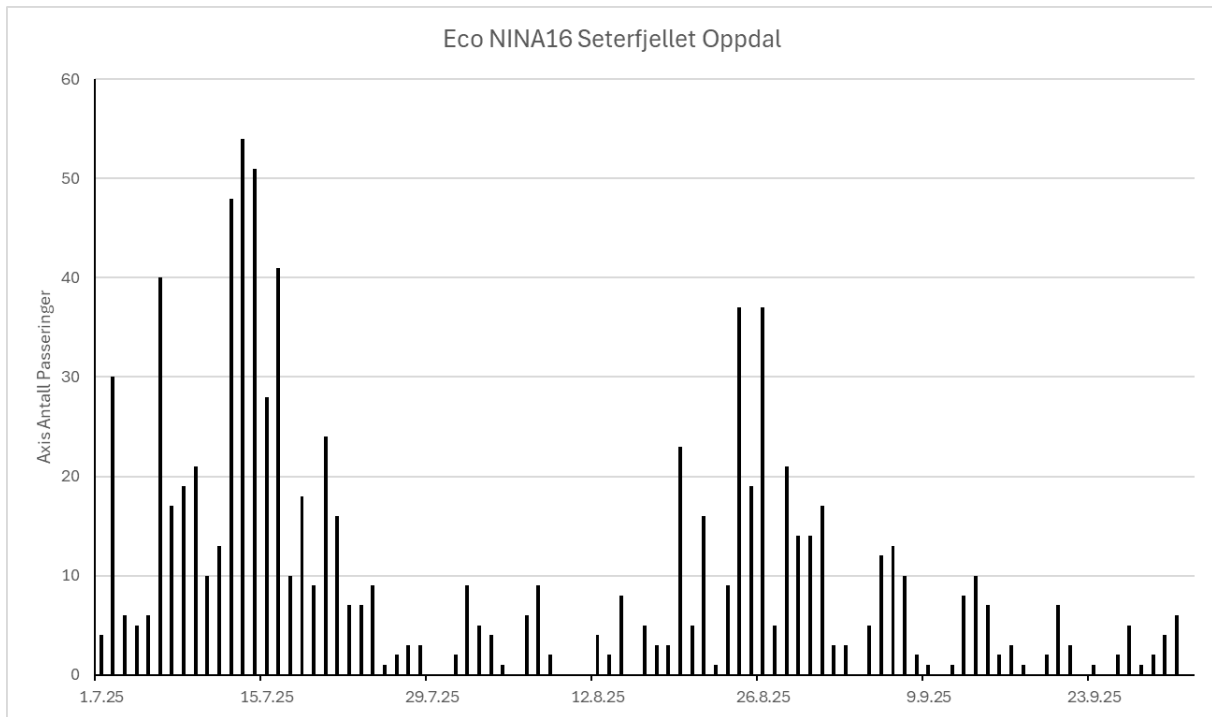


Seterfjellet, Oppdal

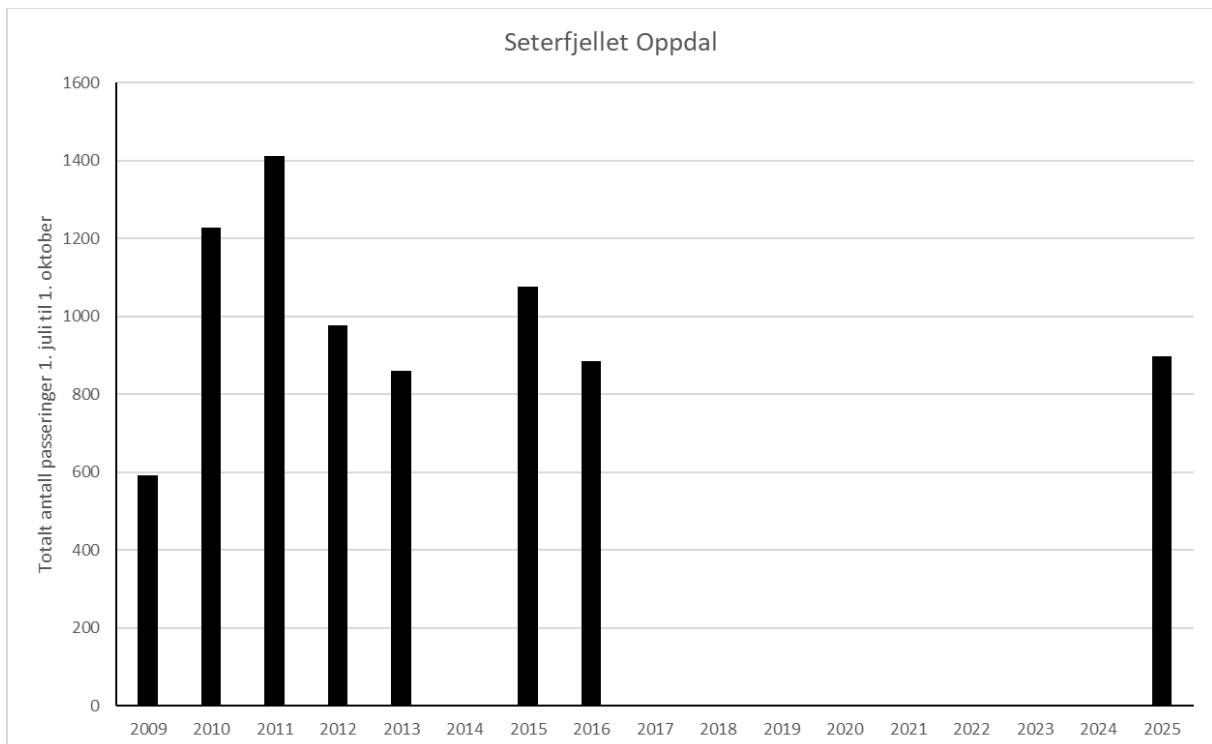
Sum: 897

Middelverdi: 10

Maks: 54



Korrigert tall for 29/8 og 30/8



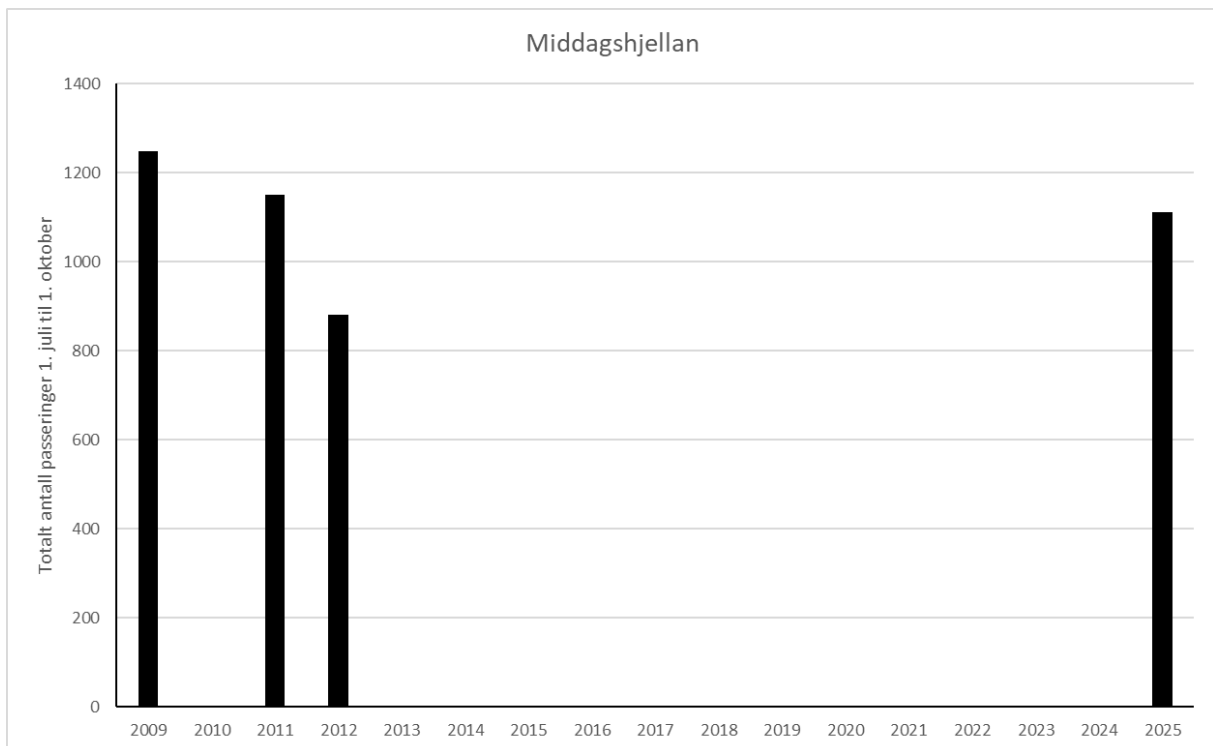
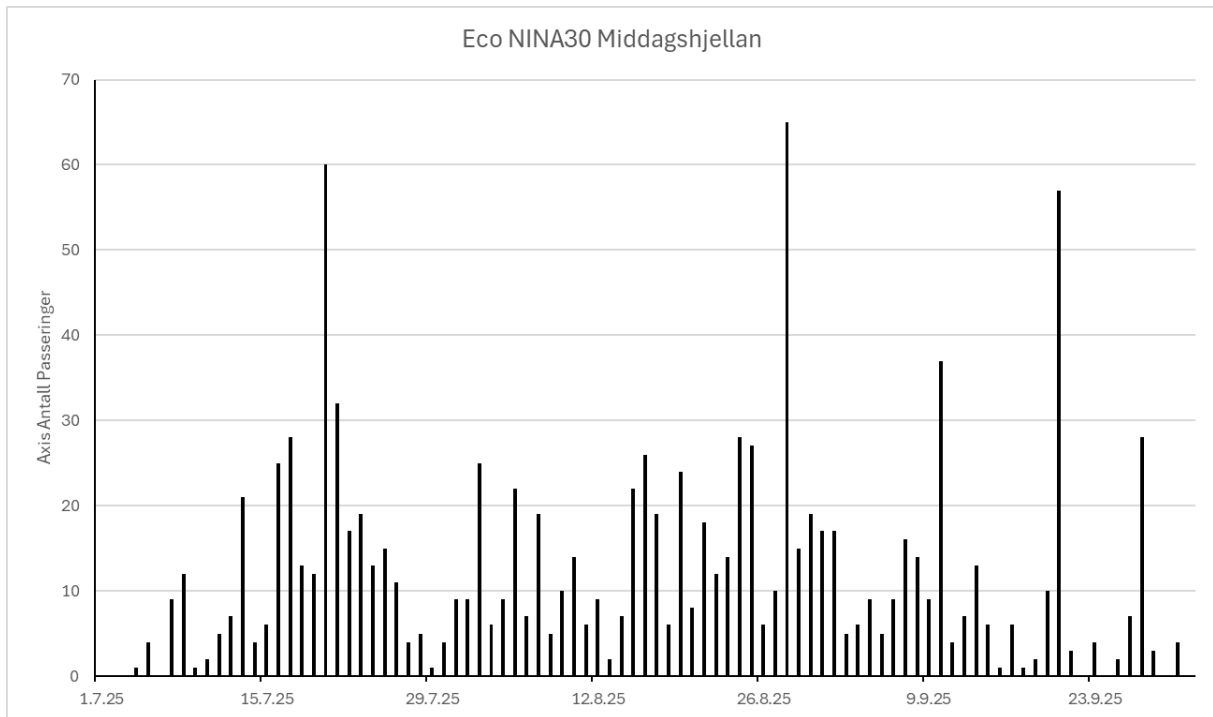
Utfart tidlig på sesongen og høsten

Middagshjellan

Sum: 1111

Middelverdi: 12

Maks: 65



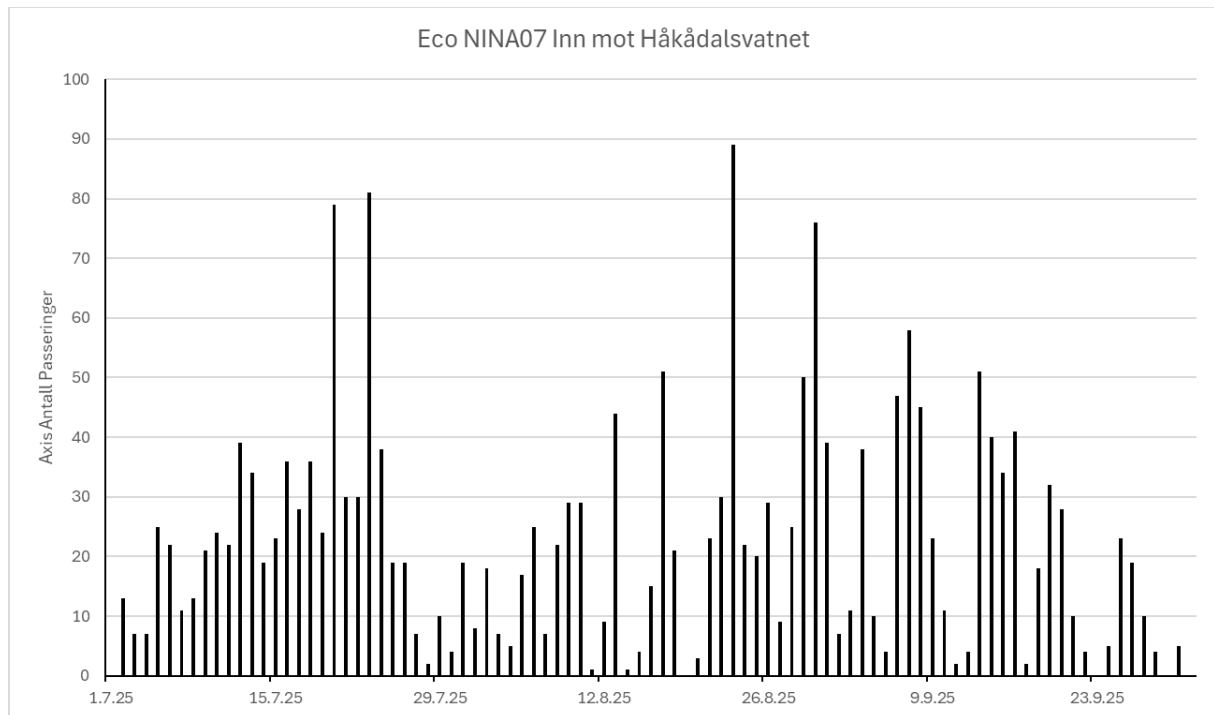
Håkådalsvatnet-Raubergshytta

Sum: 2056

Middelverdi: 22

Maks: 89

Ny posisjon – fanger opp alle stier – ikke sammenliknbar med tidligere målinger

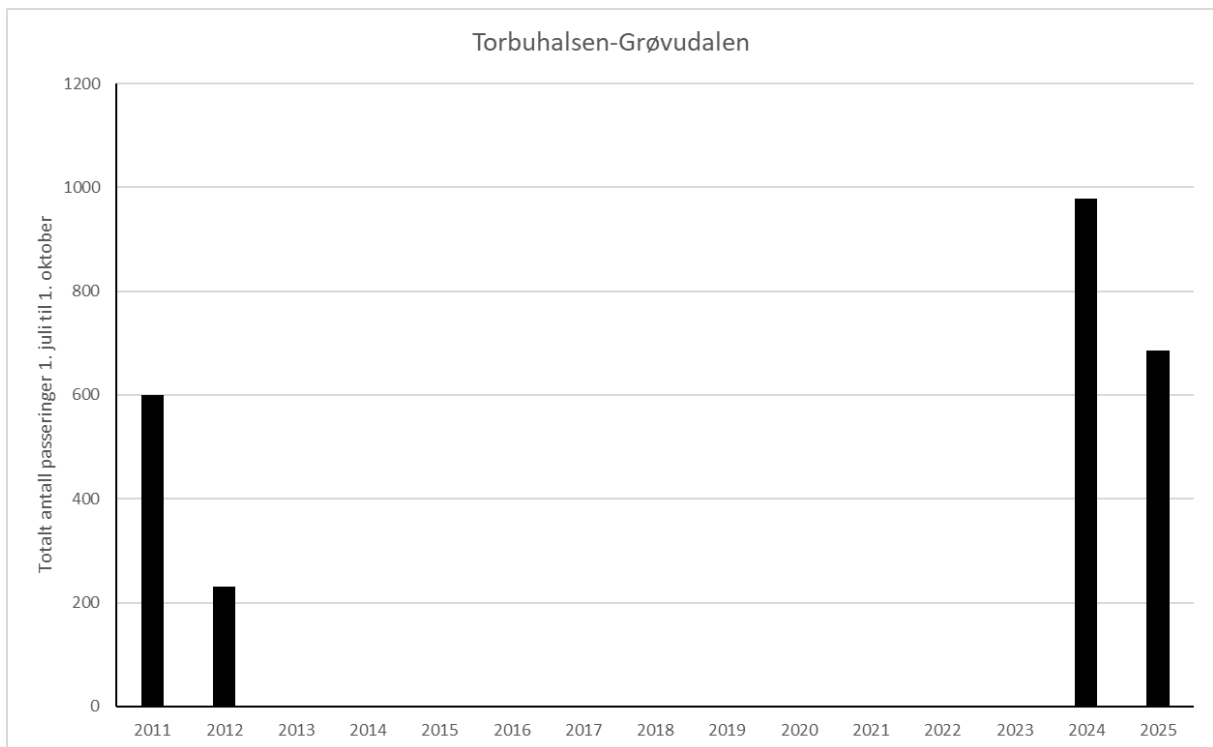
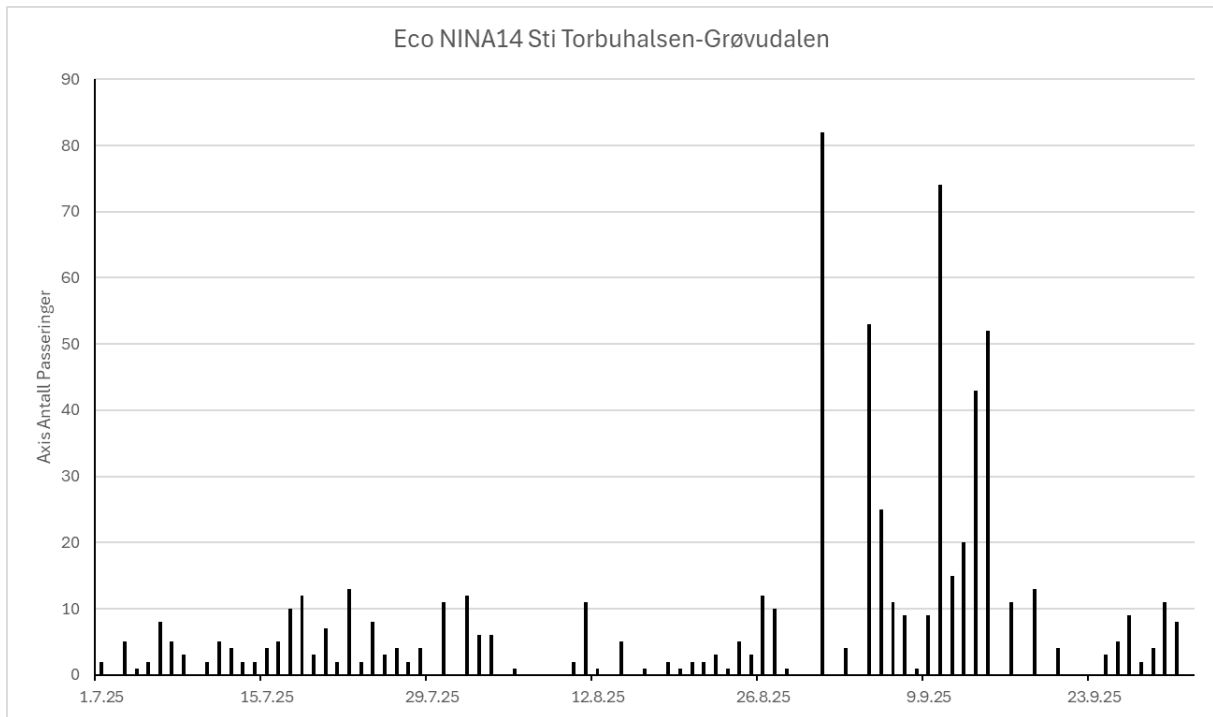


Torbuhalsen-Grøvdalen

Sum: 686

Middelverdi: 7

Maks: 82



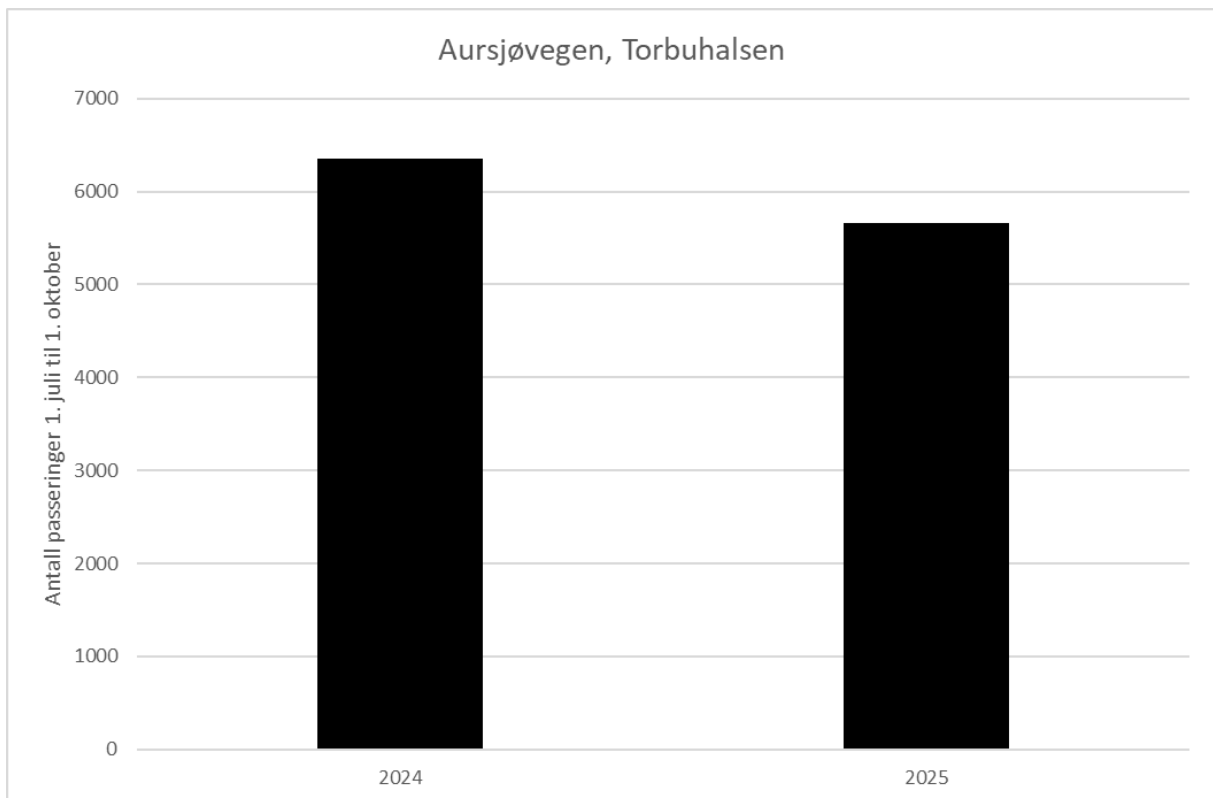
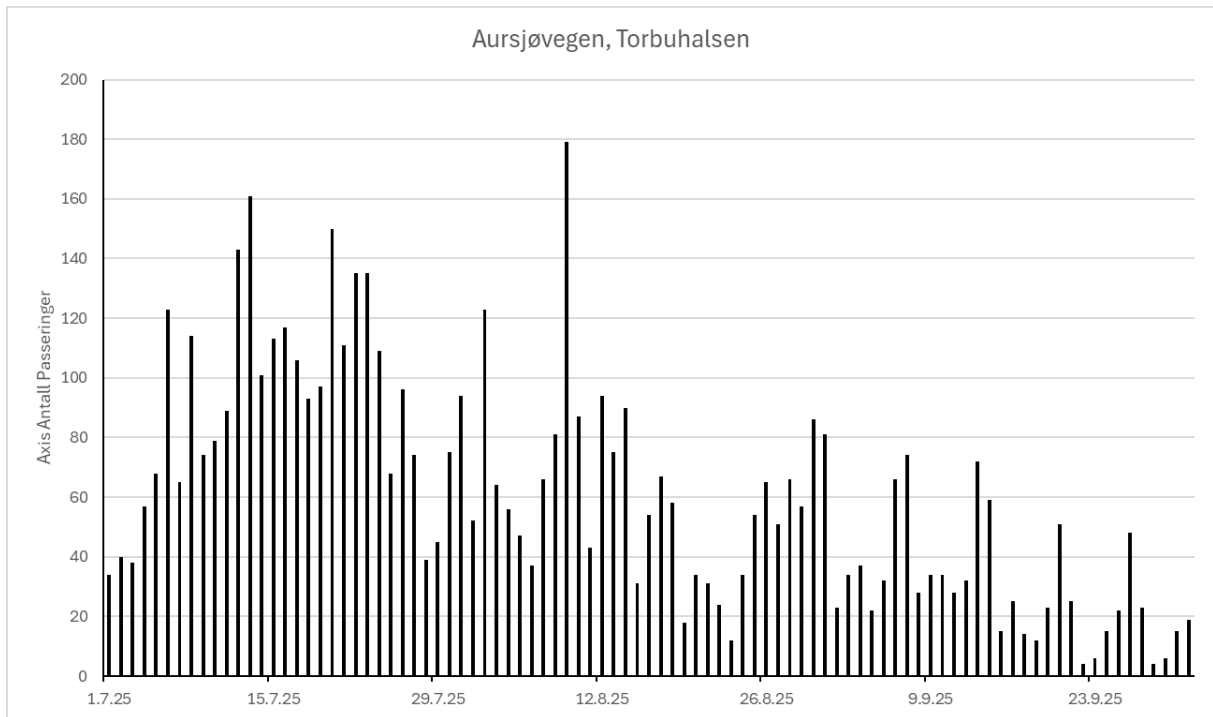
Stor utfart jakt dager/sauesanking/fine høstdager

Aursjøvegen, Torbuhalsen, bilteller

Sum: 5662

Middelverdi: 61

Maks: 179

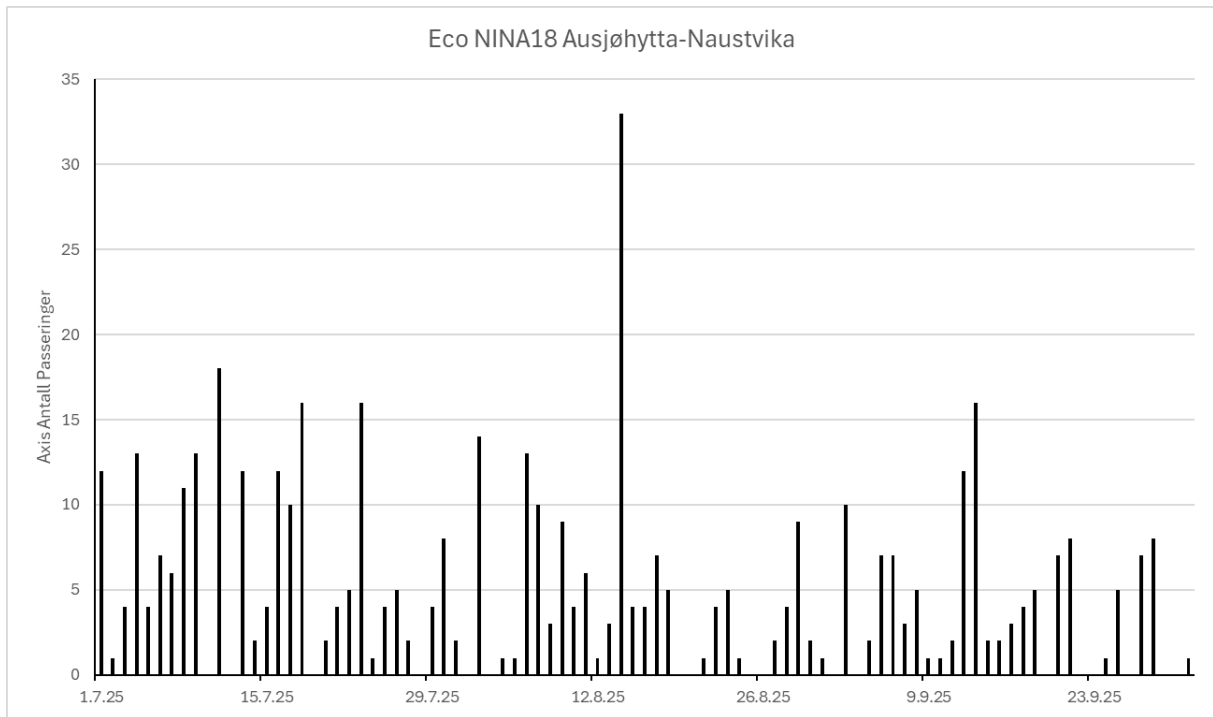


Aursjøhytta-Naustvika

Sum: 464

Middelverdi: 5

Maks: 33



Korrigert data i perioden 12/7 til 23/7

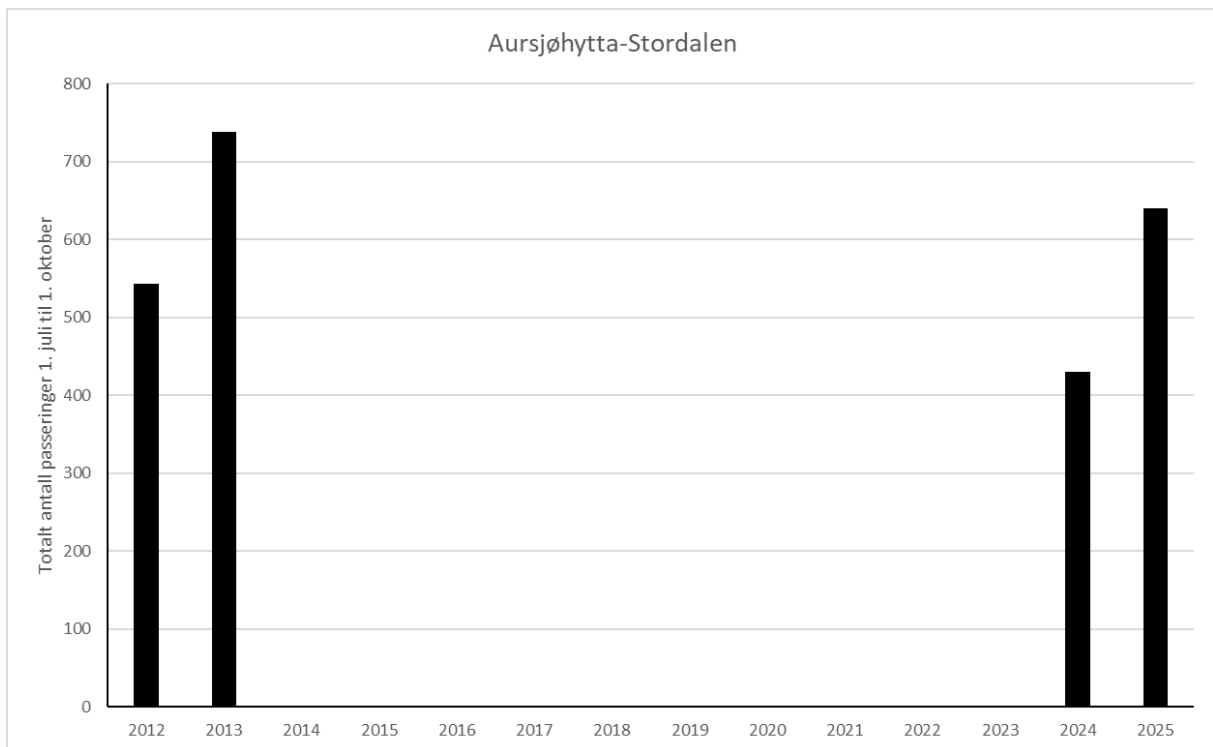
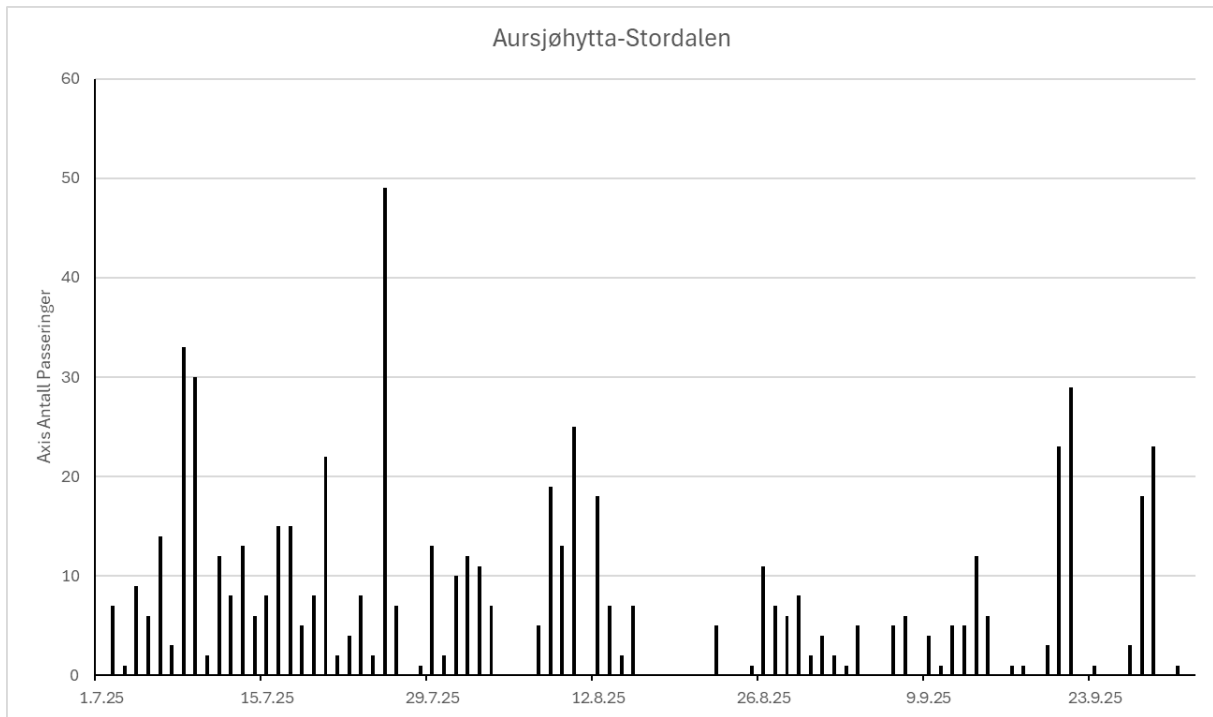
Ny plassering

Aursjøhytta-Stordalen

Sum: 640

Middelverdi: 7

Maks: 49

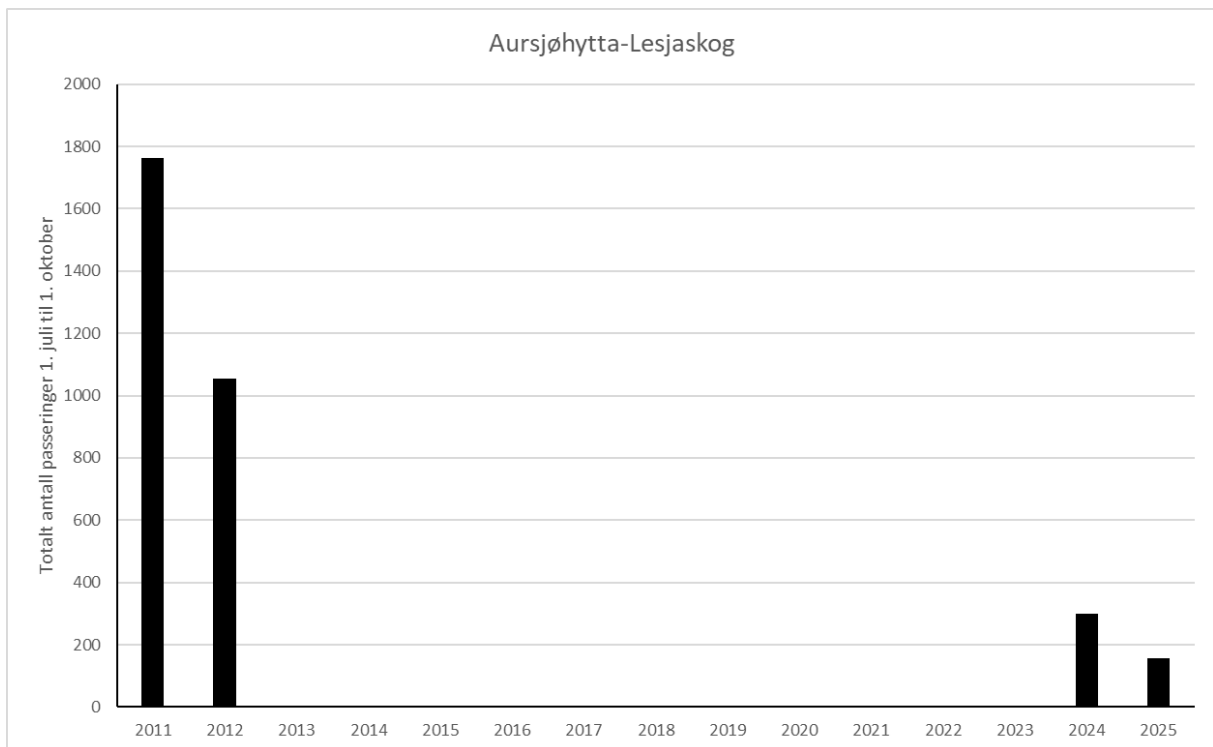
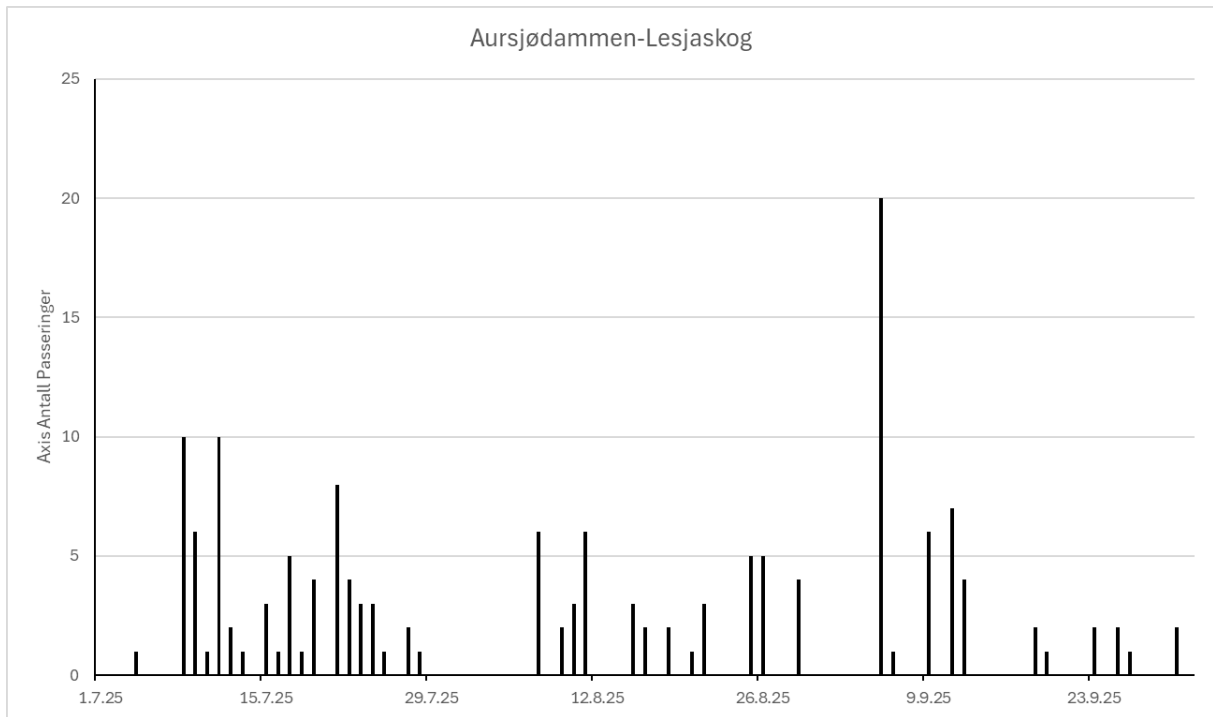


Aursjødammen-Lesjaskog

Sum: 157

Middelverdi: 2

Maks: 20

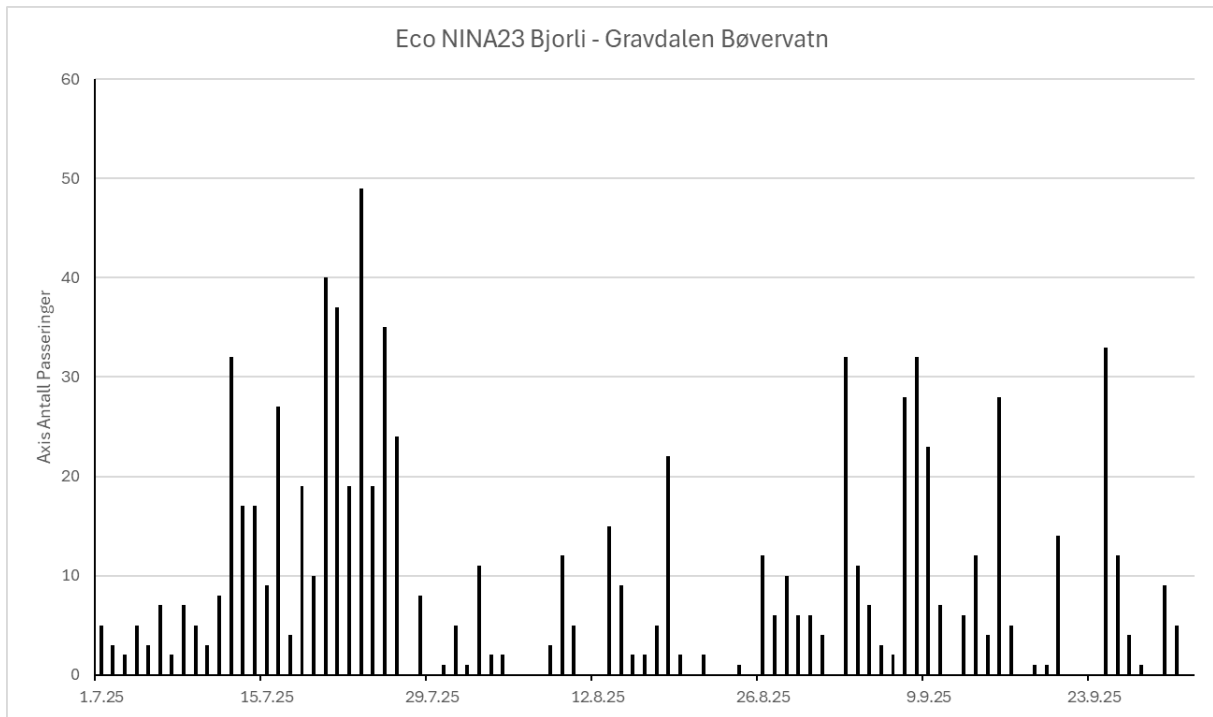


Bjorli-Gravdalen, Bøvervatn

Sum: 842

Middelverdi: 9

Maks: 49



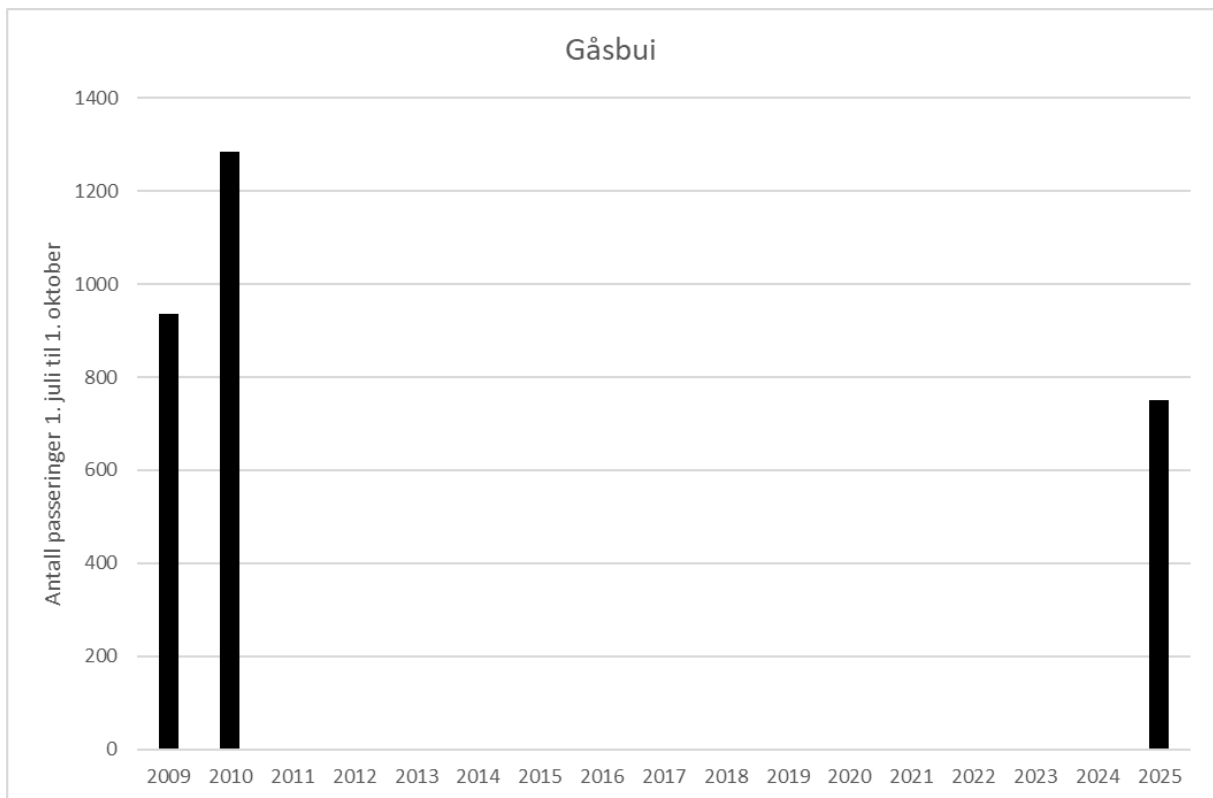
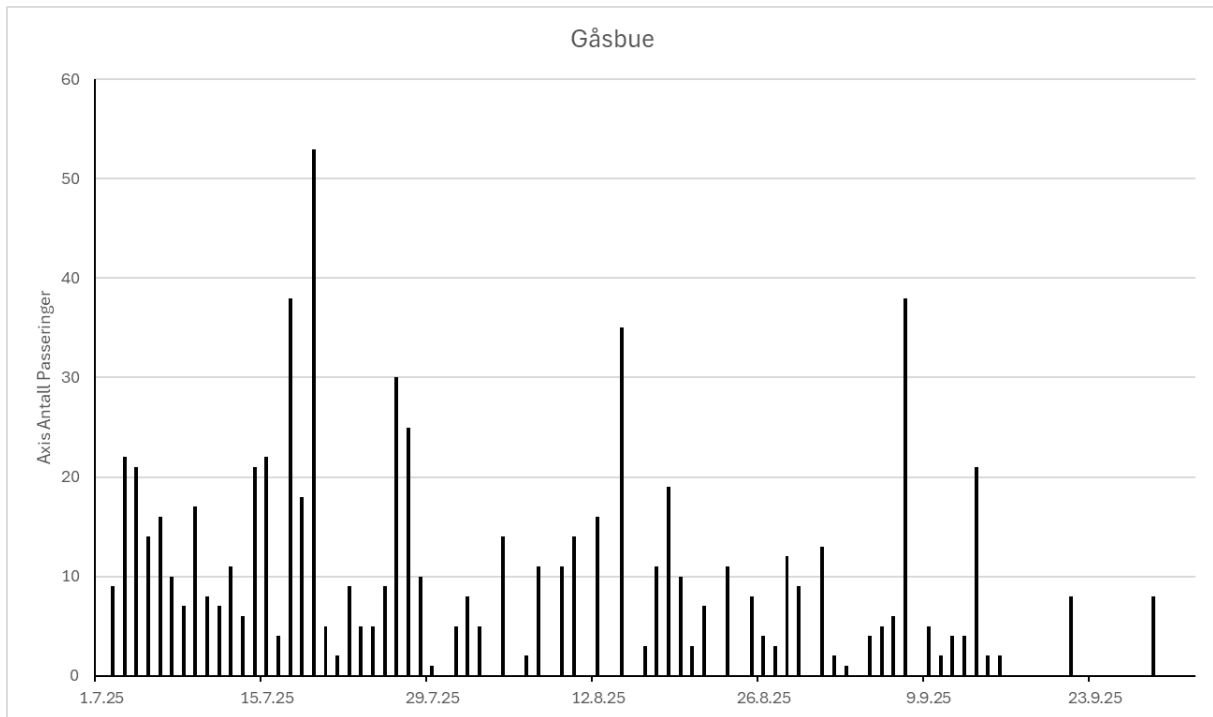
Ny lokalitet

Gåsbue

Sum: 751

Middelverdi: 8

Maks: 53

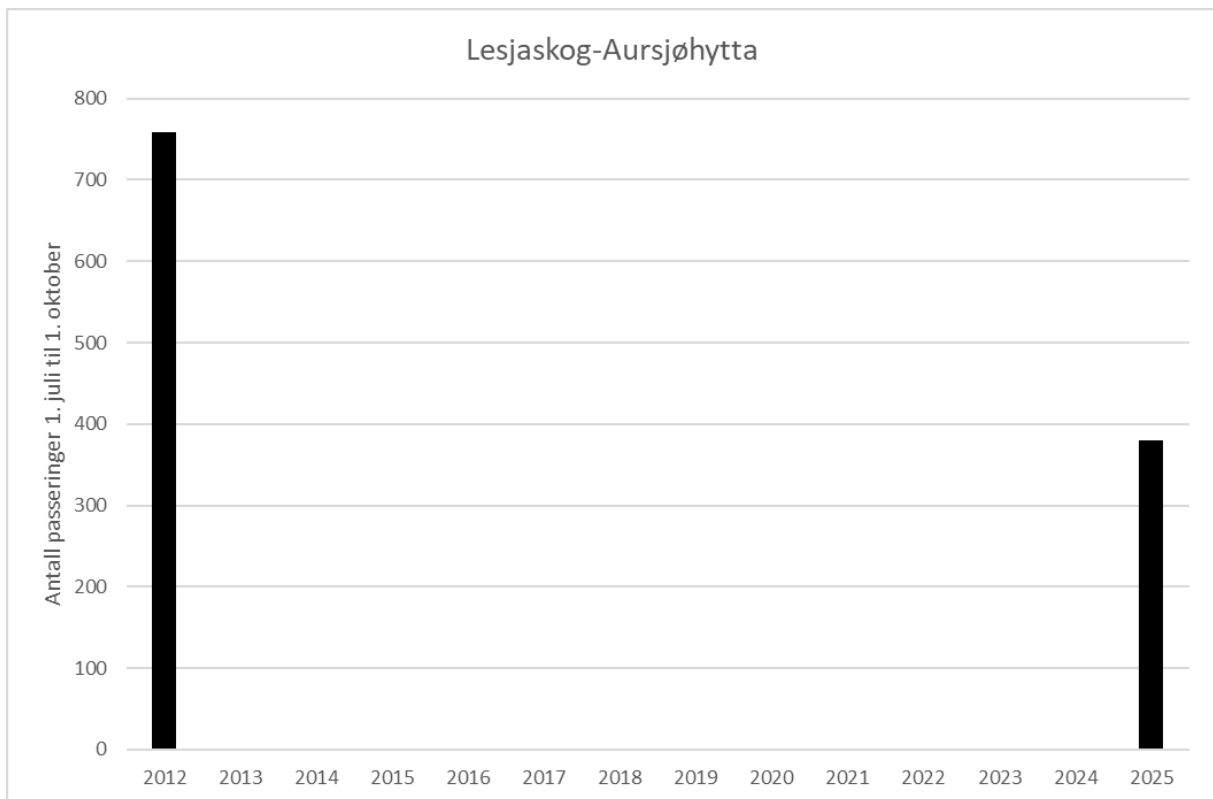
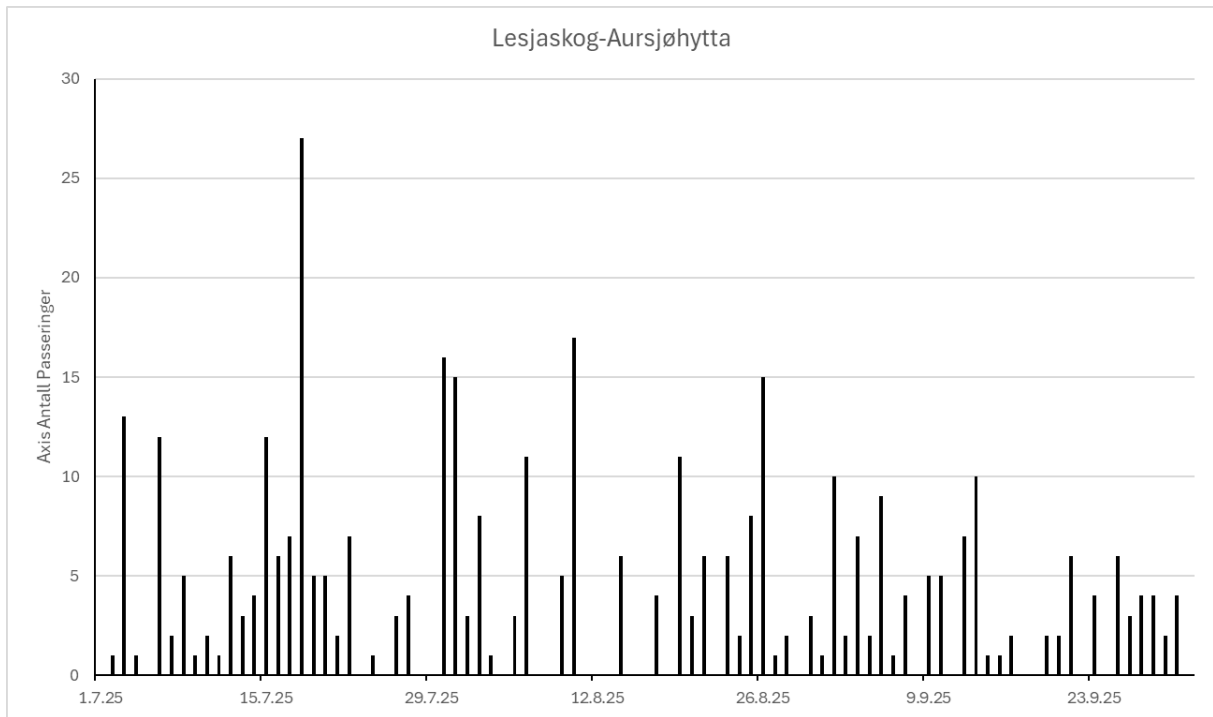


Lesjaskog-Aursjøhytta

Sum: 380

Middelverdi: 4

Maks: 27

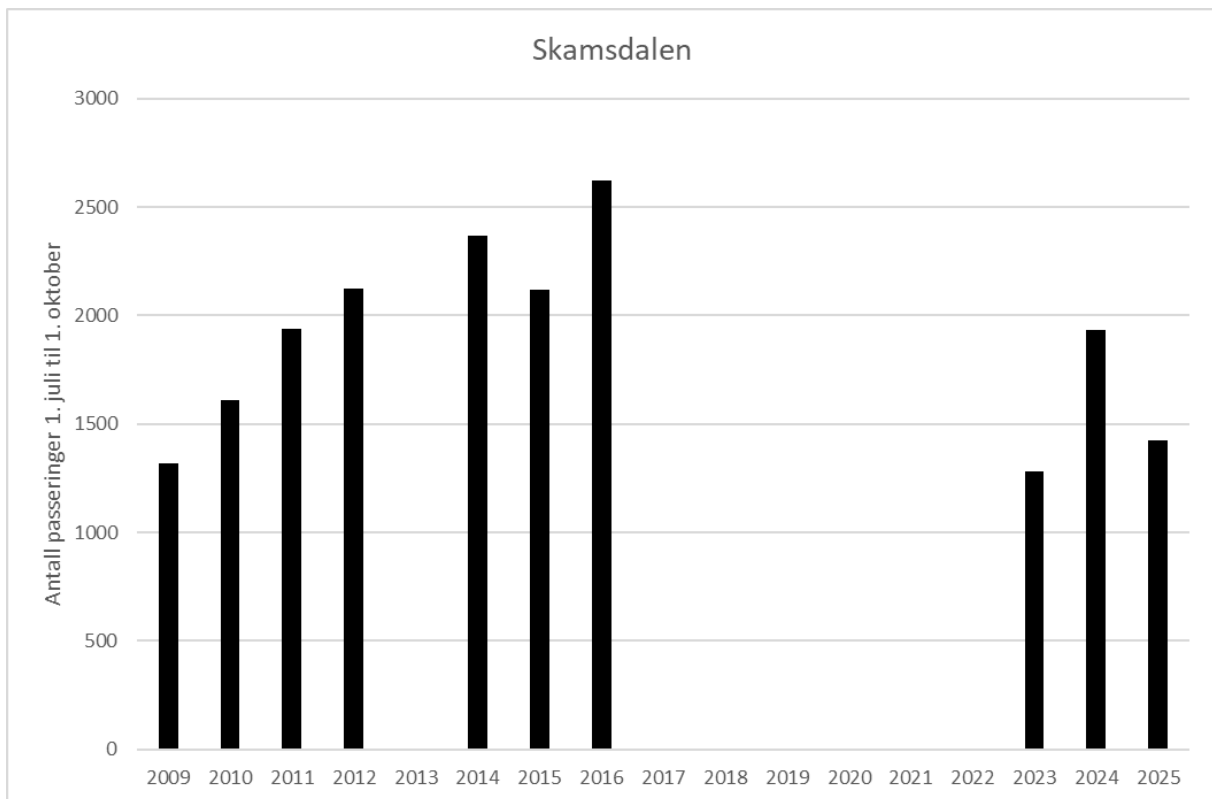
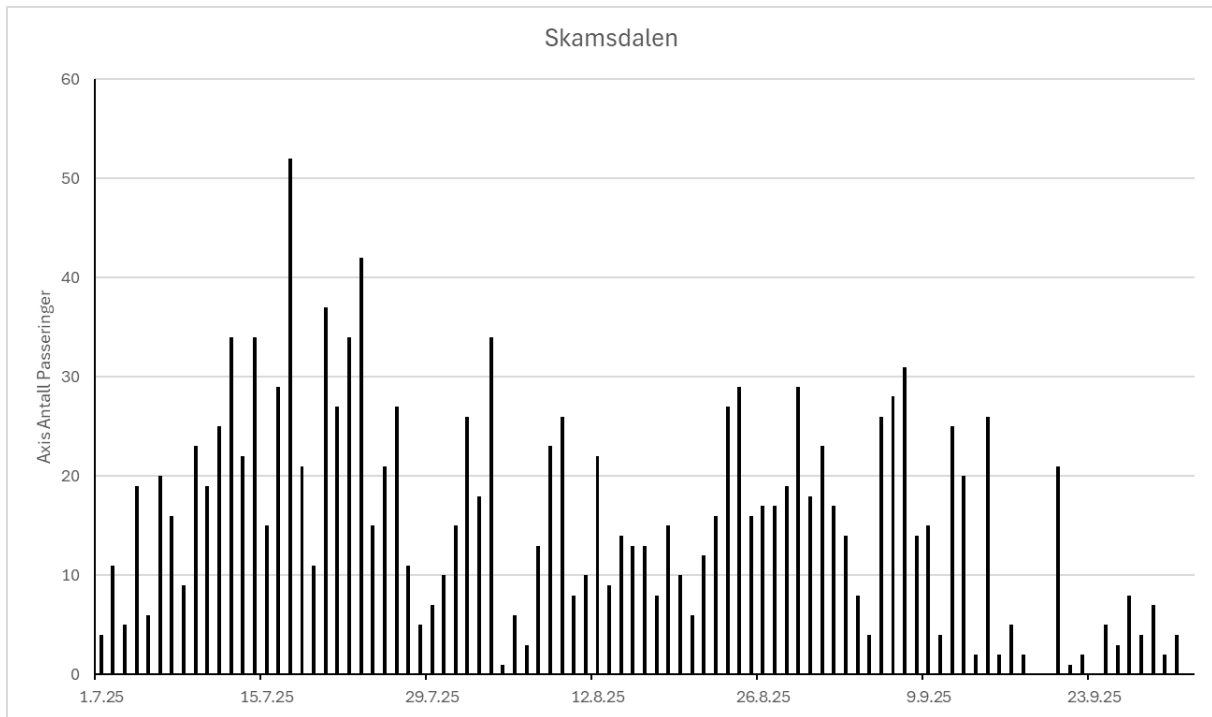


Skamsdalen

Sum: 1427

Middelverdi: 15

Maks: 52

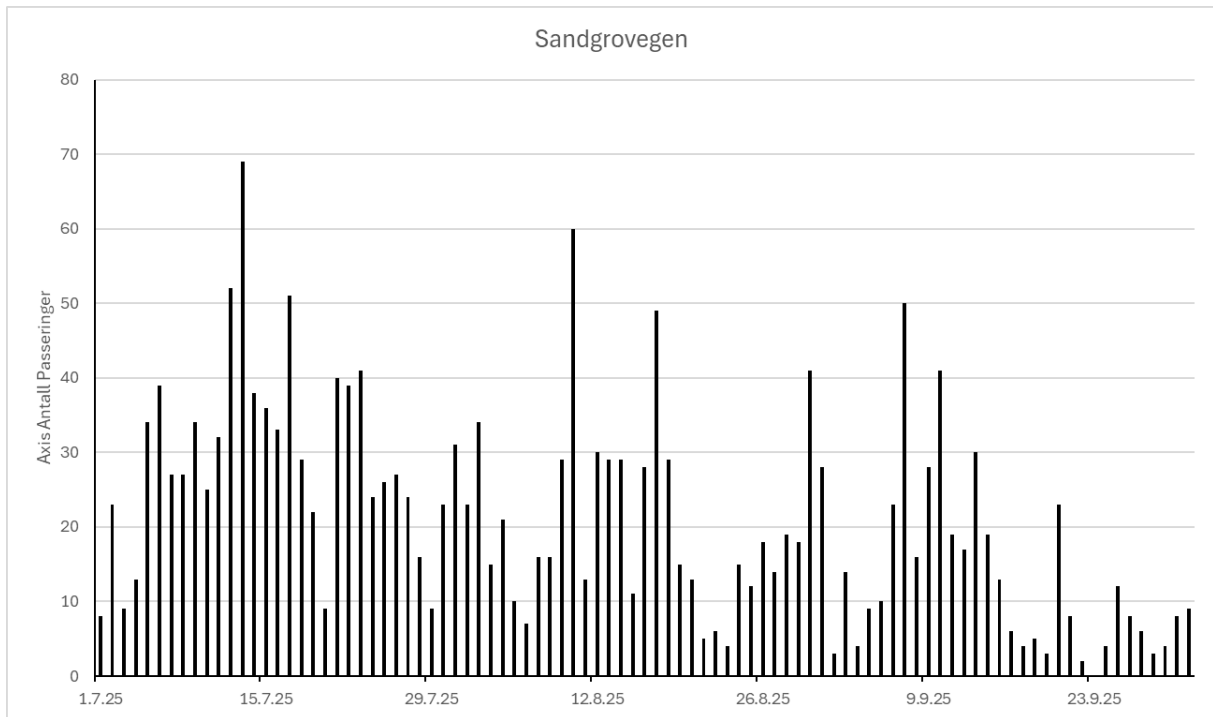


Sandgrovegen, bilteller

Sum: 1968

Middelverdi: 21

Maks: 69



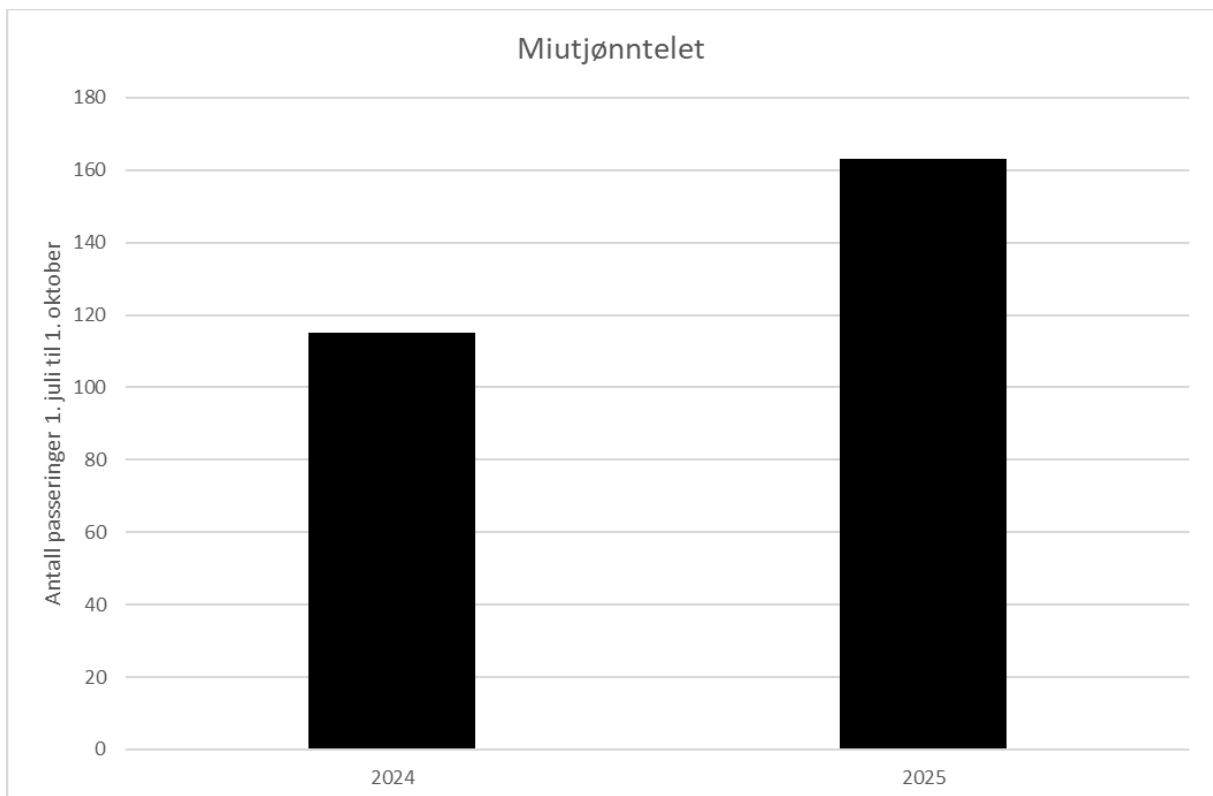
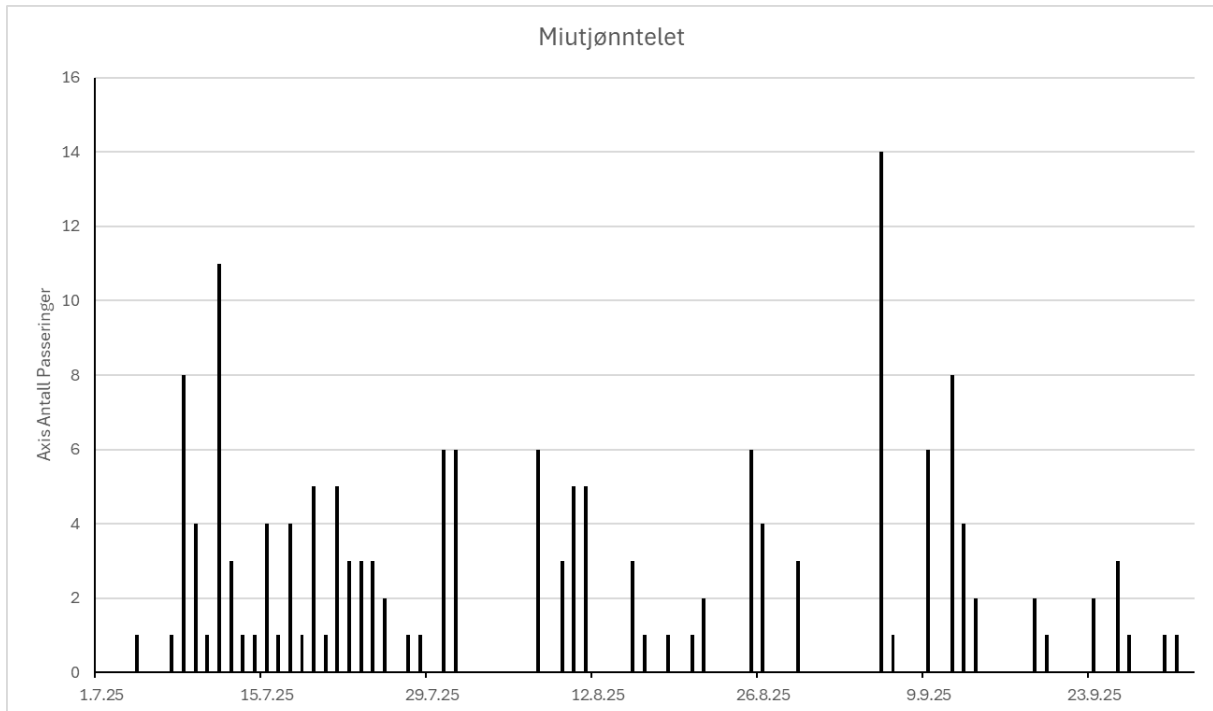
Ikke målt tidligere

Miutjønntelet

Sum: 163

Middelverdi: 2

Maks: 14

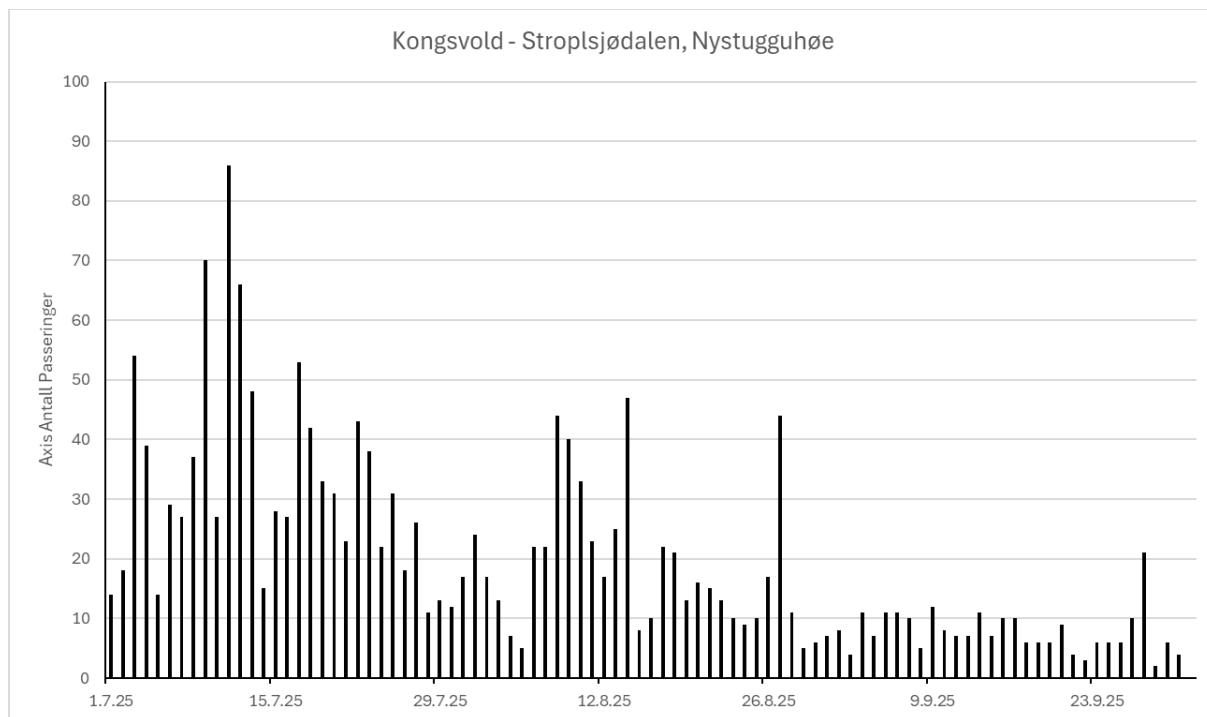


Kongsvold-Stroplsjødalen, Nystugguhøe (feil i data)

Sum: 1822

Middelverdi: 20

Maks: 86



Feil i data – finner ikke feilen. Sjekket telleren – den er ok. Oppdaget? Noe med plasseringen?